

# “Seizing Opportunity and Creating Value”



EXPLORING in MEXICO **PINO de PLATA** Ag-Pb-Zn Project

TSX Venture: SSE  
US OTCQB: SSEBF  
Frankfurt: S6Q

[www.silverspruceresources.com](http://www.silverspruceresources.com)

June 2023



# Cautionary Statement

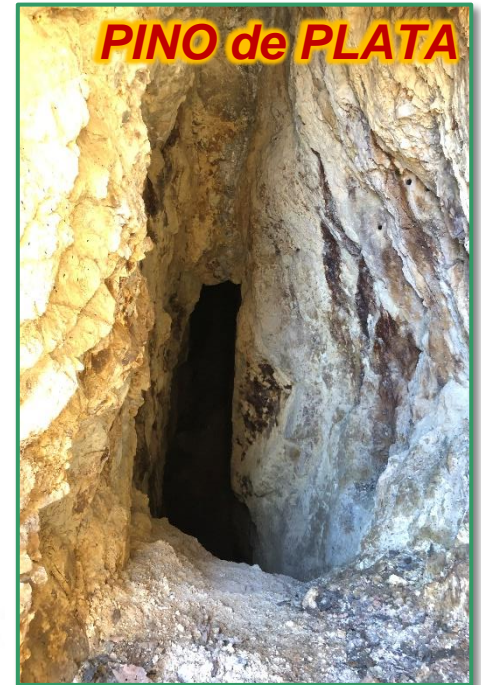
TSX Venture: SSE

Investors are cautioned that, except for statements of historical fact, certain information contained in this document includes "forward-looking information" with respect to a performance expectation for SSE. Such forward-looking statements are based on current expectations, estimates and projections formulated using assumptions believed to be reasonable and involving a number of risks and uncertainties which could cause actual results to differ materially from those anticipated. Such factors include, without limitation, fluctuations in foreign exchange markets, the price of commodities in both the cash market and futures market, changes in legislation, taxation, controls and regulations of national and local governments and political and economic developments in Canada and other countries where SSE carries-out or may carry-out business in the future, the availability of future business opportunities and the ability to successfully integrate acquisitions or operational difficulties related to technical activities of mining and reclamation, the speculative nature of exploration and development of mineral deposits located, including risks in obtaining necessary licences and permits, reducing the quantity or grade of reserves, adverse changes in credit ratings, and the challenge of title. The Company does not undertake an obligation to update publicly or revise any forward-looking statements or information, whether as a result of new information, future events or otherwise, unless so required by applicable securities laws.



# Project Locations - Mexico

TSX Venture: SSE



TSX Venture: SSE

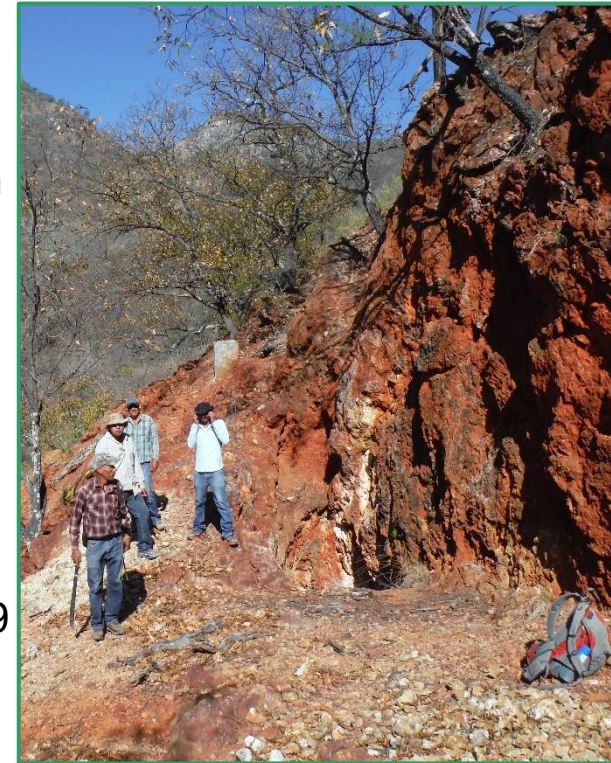
***Pino de Plata  
Ag-Au Project,  
Chihuahua,  
Mexico***



# Pino de Plata - The Property

TSX Venture: SSE

- ✓ Located 15 km away from Coeur Mining's flagship Palmarejo Mine in Chihuahua, Mexico
- ✓ Four road-accessible concessions comprising 397 hectares in the heart of the Sierra Madre Occidental gold-silver belt
- ✓ Definitive Purchase Agreement for 100% interest
- ✓ Surface exposures and dumps have yielded high silver and base metal values
- ✓ **Permitting for 30 drill pads was approved in 2018**
- ✓ Twelve targets identified for immediate Phase I drilling in 2019
- ✓ Disseminated epithermal, replacement and skarn carbonate, and vein targets



# Pino de Plata - Vein Targets

TSX Venture: SSE



The Sierpe I & II and Theodora veins are open on strike and have indications of high grade **>8 opt (250 g/t) Ag**

# Pino de Plata - Carbonate Replacement Targets

TSX Venture: SSE



Santa Elena - Gossan Area is a viable target for replacement Ag-Pb-Zn-Cu deposits where extensive gossans are anomalous in Ag and base metals, unoxidized replacement mineralization approaches **200 g/t Ag** with potential for relatively shallow mineralization over an area of >20Ha



# Pino de Plata - Epithermal Targets

TSX Venture: SSE



Terrero Vein sampled 1130 g/t Ag with 3.72% Pb for 1278 g/t AgEq. Seven out of nine samples **>1 oz/t (31.25 g/t) Ag and up to 17.8 oz/t (557 g/t) Ag.**





# Pino de Plata - Exploration and Plans

TSX Venture: SSE

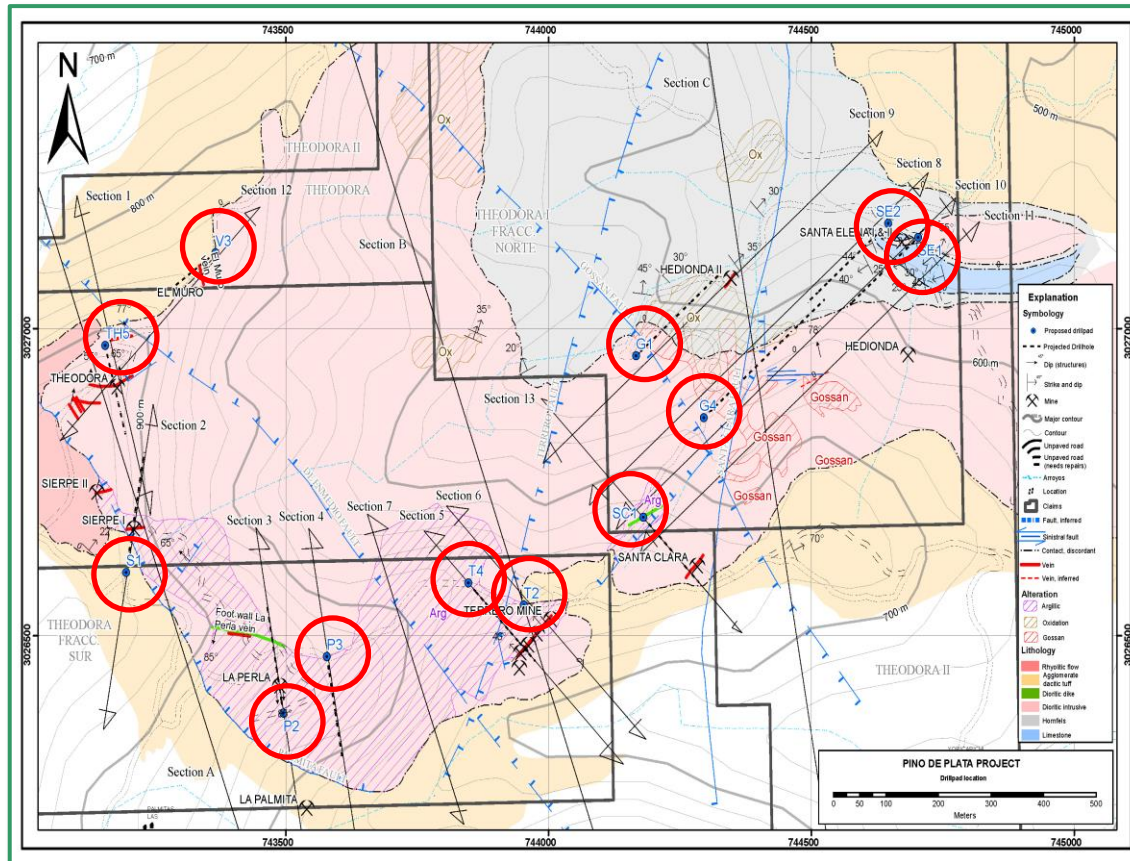
- ✓ LiDAR survey completed in 2021
- ✓ LiDAR interpretation
- ✓ **Signing of Landowner Access Agreement**
- ✓ **Drilling - Phase 1 20-30 sites 1,500m to 2,000m**
- ✓ ArcGIS compilation
- ✓ Geological, structural and lineament mapping
- ✓ Rock and trench sampling, hyperspectral analysis



# Pino de Plata Project

## Drilling Plan

TSX Venture: SSE

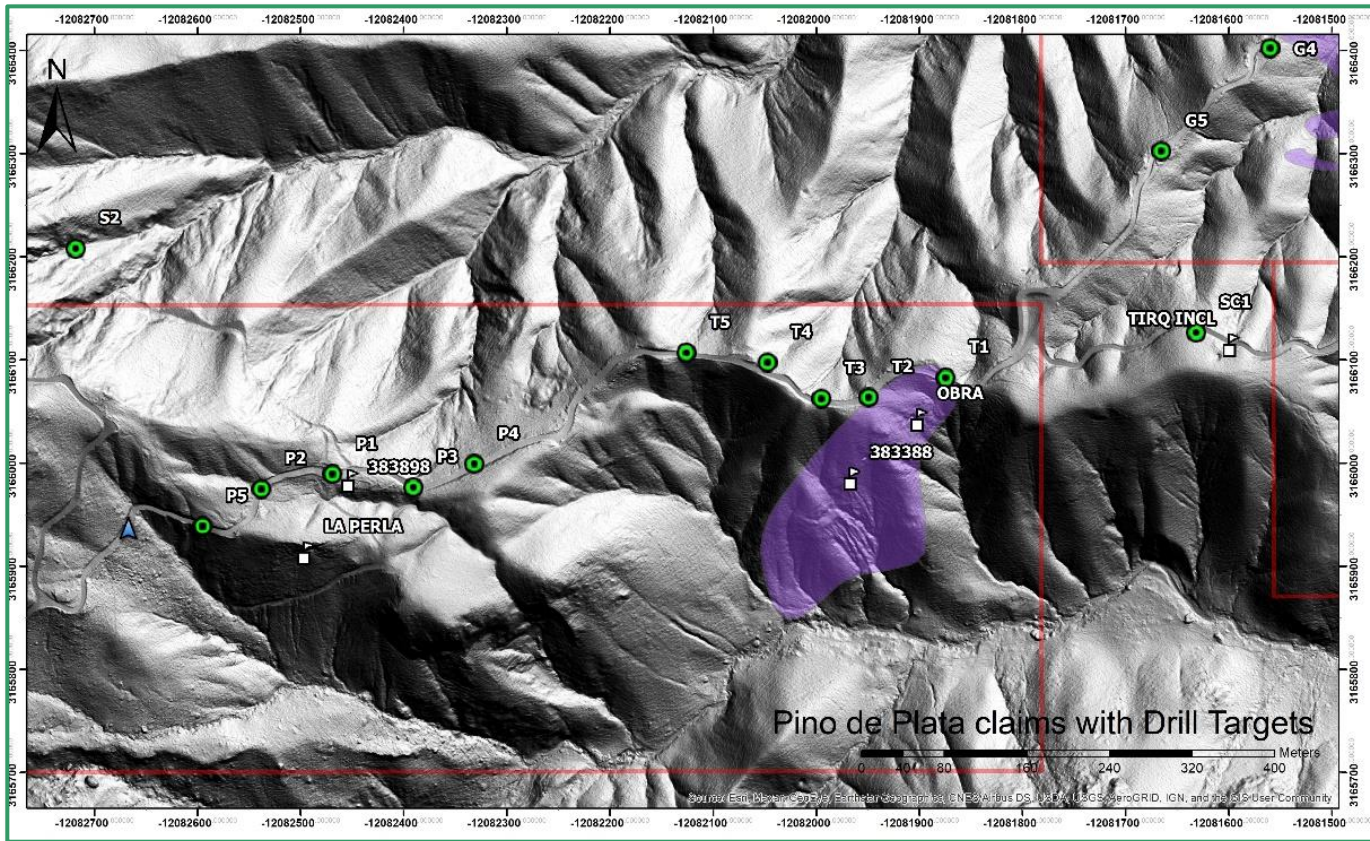


Geological map with section lines and twelve (12) proposed drill pads (dark blue symbols circled in red), collar location, azimuth and orientation, and projected depth showing distribution across property.



# Pino de Plata - Exploration Quote

TSX Venture: SSE



"We have final receipt of flight data from our recently completed LiDAR survey and are updating the Pino de Plata ArcGIS database while negotiations remain ongoing to reach an access agreement with the landowner to permit drilling on several highly promising silver targets. The new LiDAR data will provide high resolution topographic control for the proposed Phase 1 drill program. Plans in place for expedited Phase 1 drilling."



# Pino de Plata - LiDAR Mapping

TSX Venture: SSE



LiDAR enhanced digital elevation map with drill targets  
looking south across Pino de Plata property



# Silver Spruce Resources Inc.

TSX Venture: SSE, USA OTCQB: SSEBF, Frankfurt: S6Q



Suite 440, 1600 Bedford Highway,  
Bedford, Nova Scotia, B4A 1E8 Canada

Michael Kinley CEO Director 902-402-0388  
Greg Davison PGeo VPX Director 250-521-0444

[info@silverspruceresources.com](mailto:info@silverspruceresources.com)  
[www.silverspruceresources.com](http://www.silverspruceresources.com)

