

“Seizing Opportunity and Creating Value”



EXPLORING THE DRILL-READY **MELCHETT LAKE** VMS-Au, ONTARIO,
PINO de PLATA Ag-Pb-Zn AND **EL MEZQUITE** Au-Ag PROJECTS, MEXICO

TSX Venture: SSE
US NASDAQ: SSEBF
Frankfurt: S6Q

www.silverspruceresources.com

JUNE 2020



Cautionary Statement

TSX Venture: SSE

Investors are cautioned that, except for statements of historical fact, certain information contained in this document includes "forward-looking information" with respect to a performance expectation for SSE. Such forward-looking statements are based on current expectations, estimates and projections formulated using assumptions believed to be reasonable and involving a number of risks and uncertainties which could cause actual results to differ materially from those anticipated. Such factors include, without limitation, fluctuations in foreign exchange markets, the price of commodities in both the cash market and futures market, changes in legislation, taxation, controls and regulations of national and local governments and political and economic developments in Canada and other countries where SSE carries-out or may carry-out business in the future, the availability of future business opportunities and the ability to successfully integrate acquisitions or operational difficulties related to technical activities of mining and reclamation, the speculative nature of exploration and development of mineral deposits located, including risks in obtaining necessary licences and permits, reducing the quantity or grade of reserves, adverse changes in credit ratings, and the challenge of title. The Company does not undertake an obligation to update publicly or revise any forward-looking statements or information, whether as a result of new information, future events or otherwise, unless so required by applicable securities laws.



Corporate Overview - 1

TSX Venture: SSE

- ✓ **Silver Spruce Resources Inc.** is a Canadian publicly traded company that trades on the TSX Venture Exchange under the symbol SSE with **105 MM shares outstanding**.
- ✓ The Company has an experienced management team in the areas of exploration, prospect development, corporate finance, legal and public company management.
- ✓ Silver Spruce has signed a definitive option agreement to acquire 100% of the 2,124-hectare **Melchett Lake** project located within an historically active region including Copper Lake's Marshall Lake VMS project.
- ✓ Surface samples at Melchett Lake yielded up to **28.8 g/t Gold and 19% Zinc**.
- ✓ The Company has map staked an additional 1,872 hectares in November 2019 to complete coverage of **Melchett Lake** mineralization reported over 20 km strike length.



Corporate Overview - 2

TSX Venture: SSE

- ✓ Silver Spruce has signed a definitive option agreement to acquire 100% of the 397-hectare **Pino de Plata** project, 15km west from the Coeur Mining's flagship mine at Palmarejo, Chihuahua, that produced 7.5 million ounces of silver and 122,722 ounces of gold in 2018.
- ✓ Surface sampling at Pino de Plata yielded silver grades **over 1,100 g/t Ag** with highly anomalous grades of lead, zinc and gold.
- ✓ Silver Spruce recently signed an option agreement with Colibri Resource to acquire 50% interest in Yaque Minerales S.A de C.V. ("Yaque") which holds the 180-hectare El Mezquite Gold project, 170 km southeast of Hermosillo, Sonora, Mexico.
- ✓ The presence of historical artisanal mining in highly altered and oxidized andesites, rhyolitic breccias and veins, coincident chargeability anomalies, and discrete geochemical and structural trends containing broad areas of elevated precious metal values to **3.41 g/t Au and 198 g/t Ag** clearly define anomalies for detailed exploration and drilling.



Corporate Summary

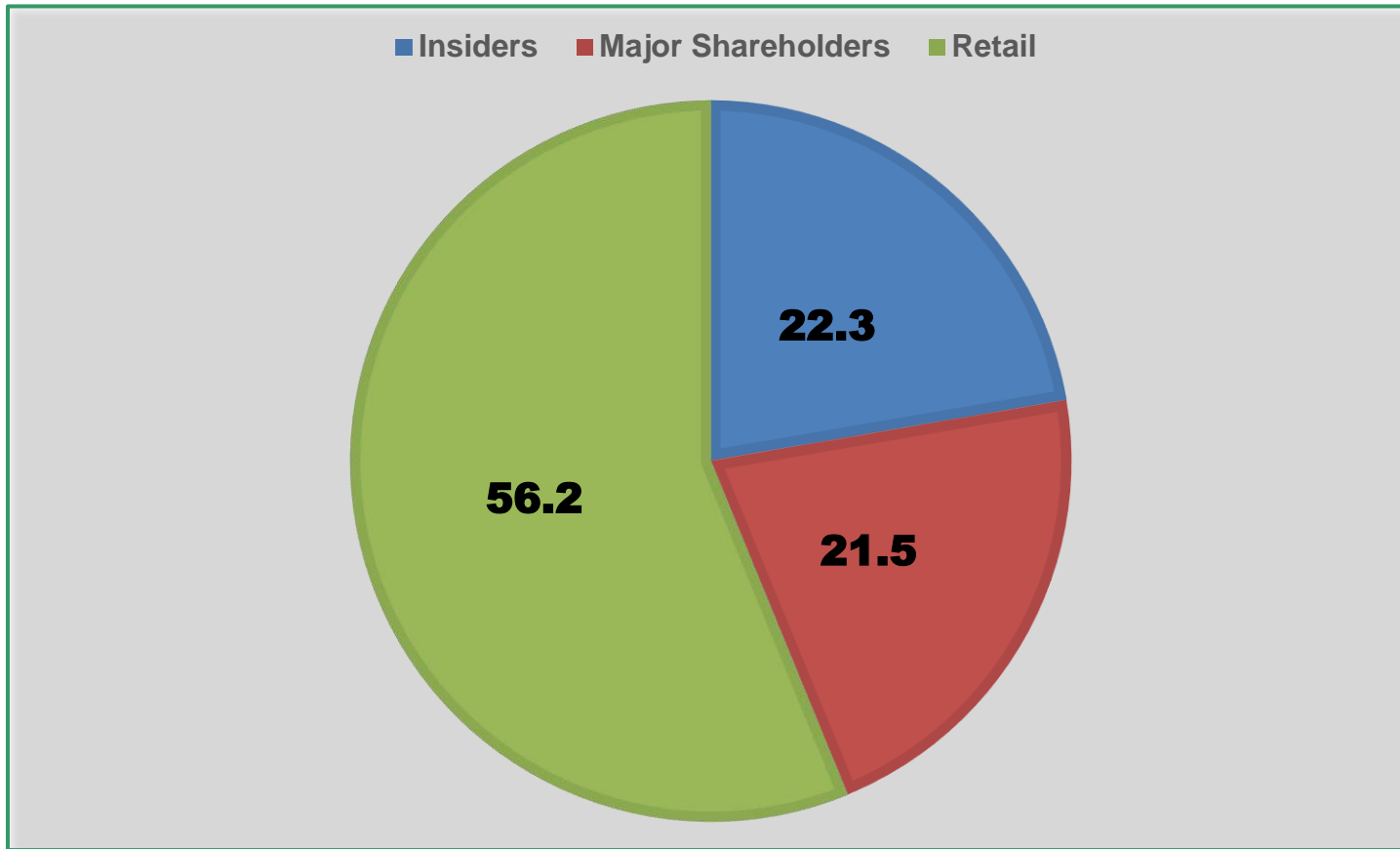
TSX Venture: SSE

June 15, 2020	
Exchange Listings	TSX Venture: SSE FSE: S6Q1 USA: SSEBF
Head office	Bedford, Nova Scotia
Shares Outstanding	105,845,833
Warrants	33,537,841
Options	300,000
Fully diluted	139,683,674
Share Price Range	\$.015 - \$.065
Debt	Nil
Tax Loss Carry Forward	> \$10 M
Bank	Canadian Imperial Bank of Commerce
Auditors	Grant Thornton LLP



Shareholder Breakdown

TSX Venture: SSE



Key Team Members

TSX Venture: SSE

Dr. Brian Penney, PhD, DIC, P.Eng., CEO, Chairman/Director

- ✓ Ph.D.- High energy nuclear physics-Imperial College of Science & Technology, Univ. of London.

Kevin O'Connor, Director

- ✓ Corporate attorney based in Chicago, IL, focused on M&A, Joint Ventures and divestitures.

Greg Davison, MSc, PGeo, Director, Qualified Person – Melchett Lake, Mezquite

- ✓ Professional exploration geologist with forty-two years of experience licensed with the Engineers & Geoscientists of British Columbia (EGBC).

Art Brown, Director

- ✓ 25+ years of public company directorship and management.

Kevin Thieneman, Director

- ✓ 25+ years of global company directorship and management, licensed attorney and CPA.

Camilla Cormier, CPA, CFO

- ✓ 30 years experience as CFO and Controller, including 14 years with public companies.

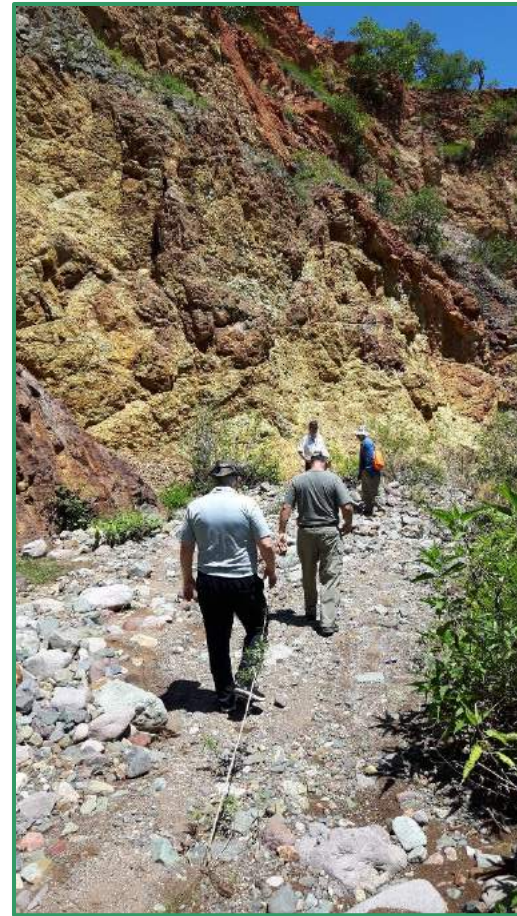
Craig Gibson, PhD, CPG, Qualified Person – Pino de Plata

- ✓ More than 25 years of exploration in Mexico; Certified Professional Geologist (AIPG).



TSX Venture: SSE

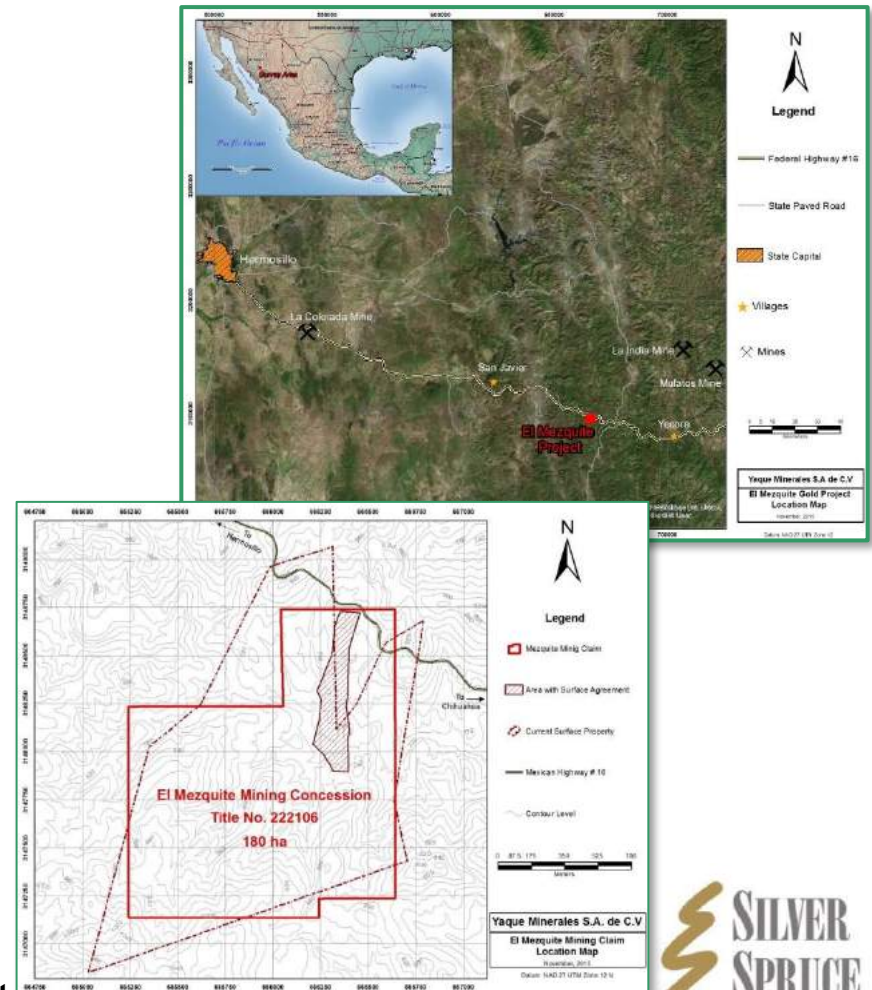
El Mezquite Au-Ag Project, Sonora, Mexico



El Mezquite - The Property

TSX Venture: SSE

- ✓ Located 50km SW of Mulatos and 58km SW of La India Mines in very productive region of the Sierra Madre Occidental gold-silver belt
- ✓ Road-accessible concessions comprising 180 hectares located 170km SE of Hermosillo
- ✓ Exploration Target is low grade, large tonnage, heap leachable deposit
- ✓ October 2019 43-101 report
- ✓ Accessible infrastructure and skilled workforce
- ✓ Option Agreement to earn 50% interest



El Mezquite - Highlights

TSX Venture: SSE

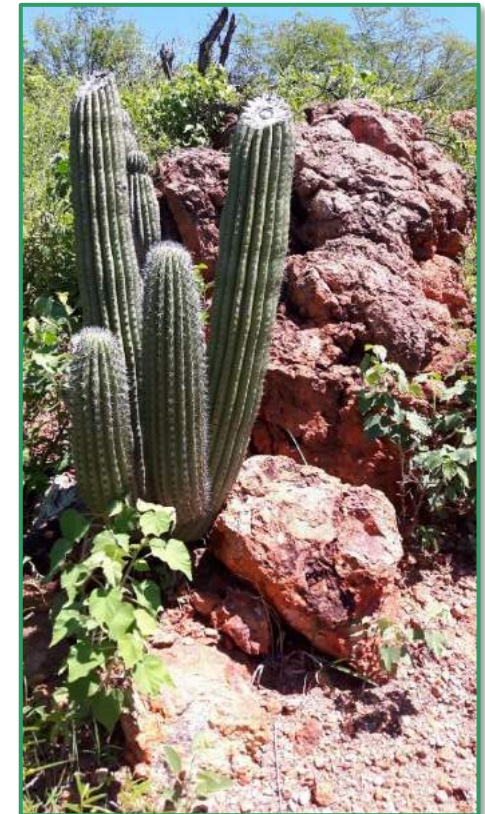
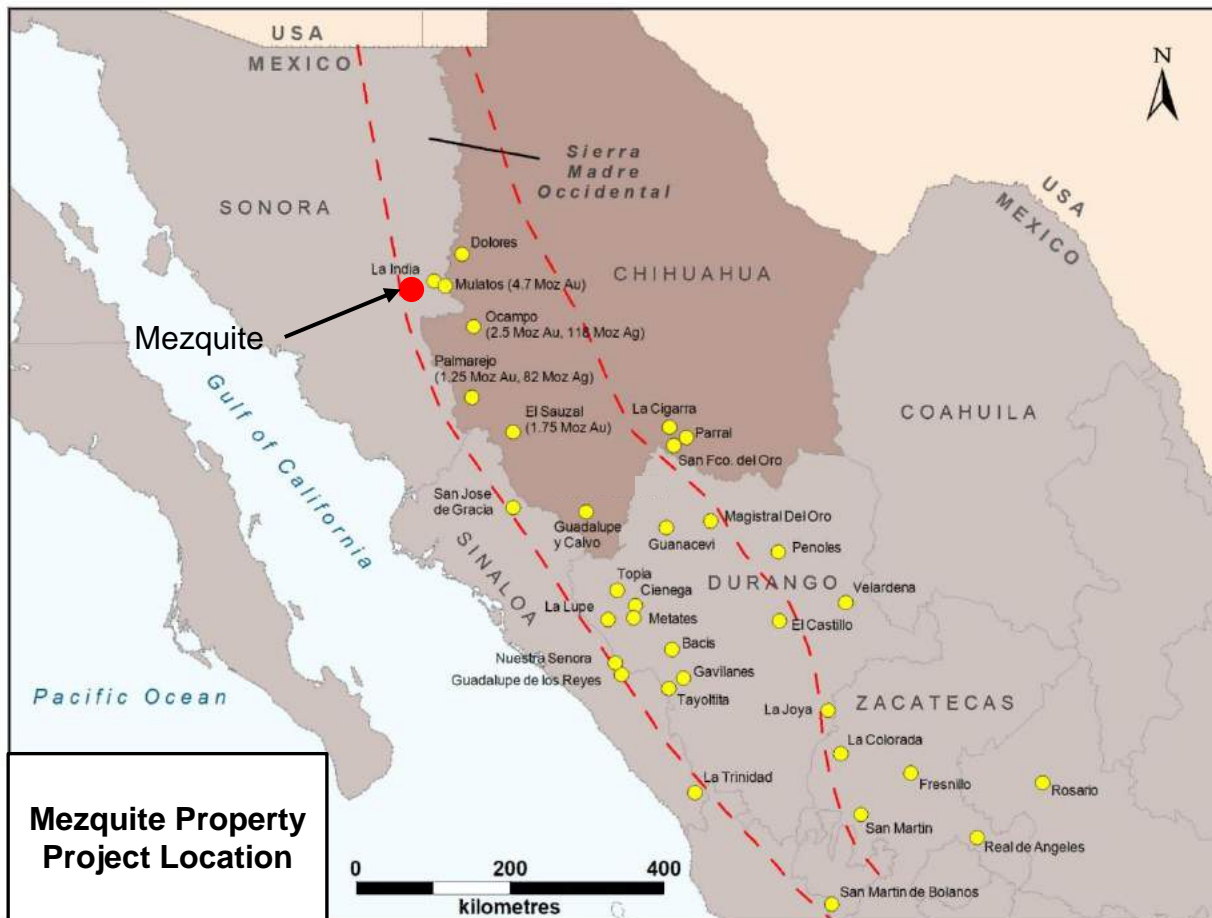
- ✓ 398 Rock Chip Samples
 - 58 showing high values (>0.10 g/t Au)
 - up to 3.41 g/t Au & 198 g/t Ag
- ✓ 3DIP & Mag survey completed over eastern side of property – drill targets identified
- ✓ Historical artisanal mining - 30 m adit into highly altered and oxidized rock
- ✓ Geochemically anomalous 300m x 600m mineralized zone identified
- ✓ Assessment of historic obras (workings) and additional chargeability anomalies warranted on western side of property
- ✓ **No drilling to date on the property**



Project Location

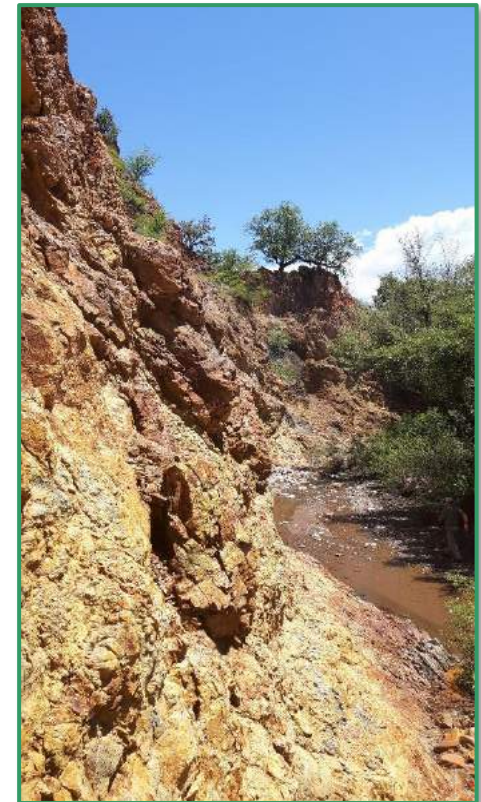
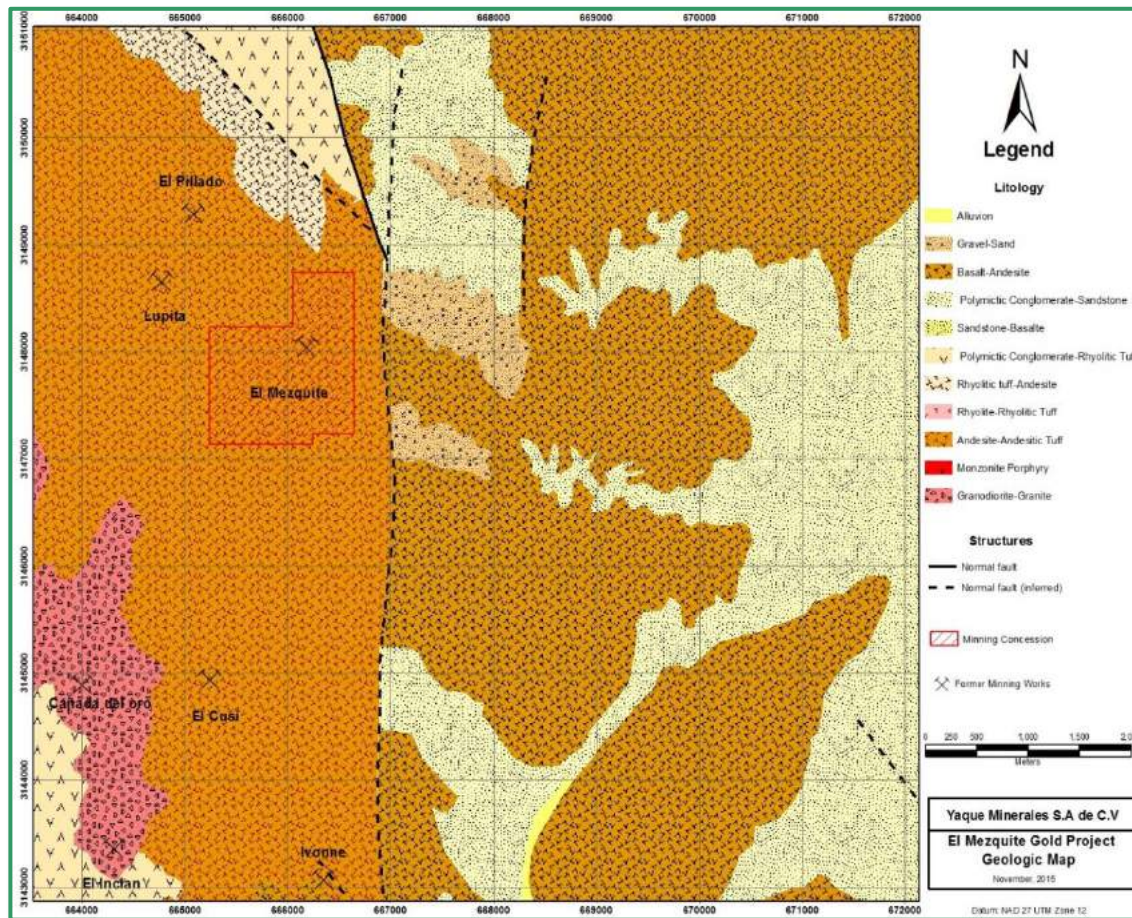
Sierra Madre Occidental - Sonora

TSX Venture: SSE



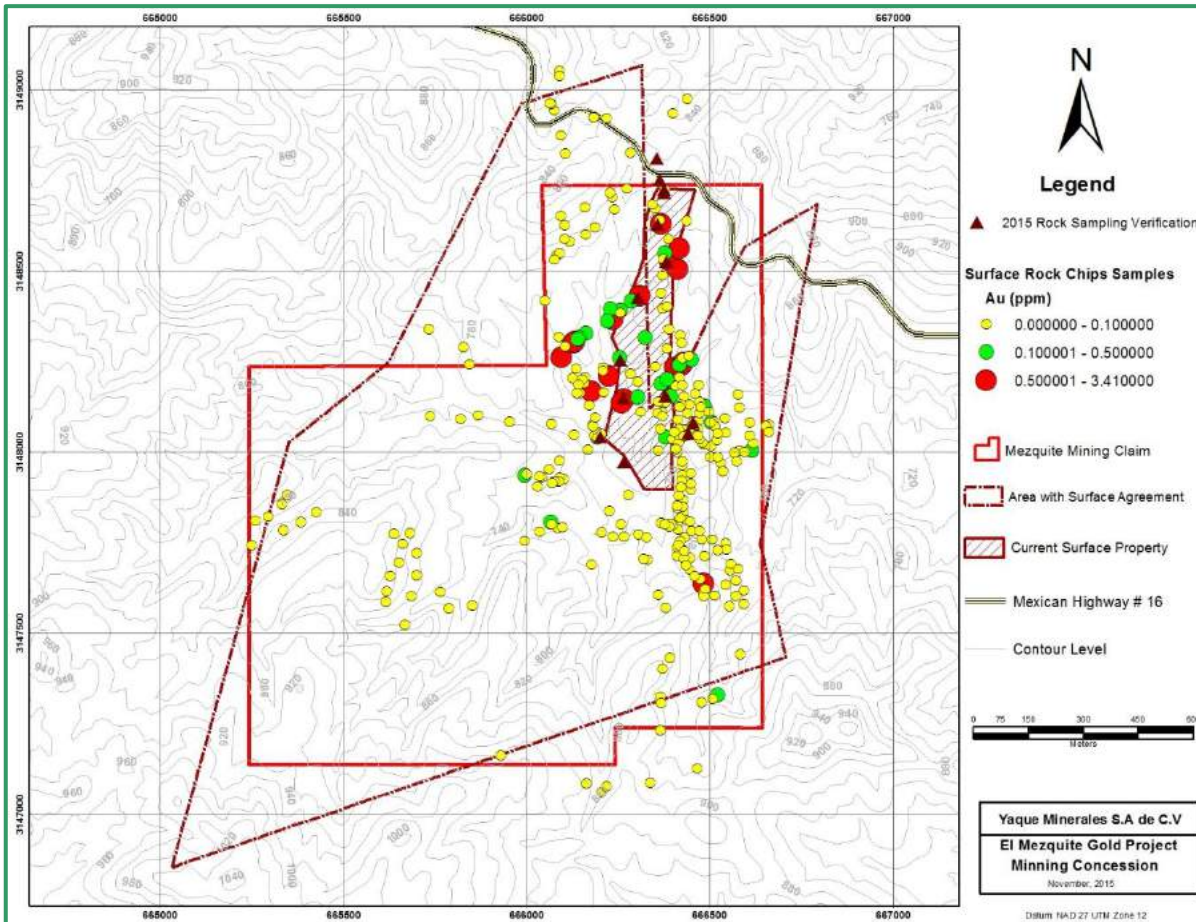
El Mezquite - Regional Geology

TSX Venture: SSE



El Mezquite - Rock Chip Sampling

TSX Venture: SSE



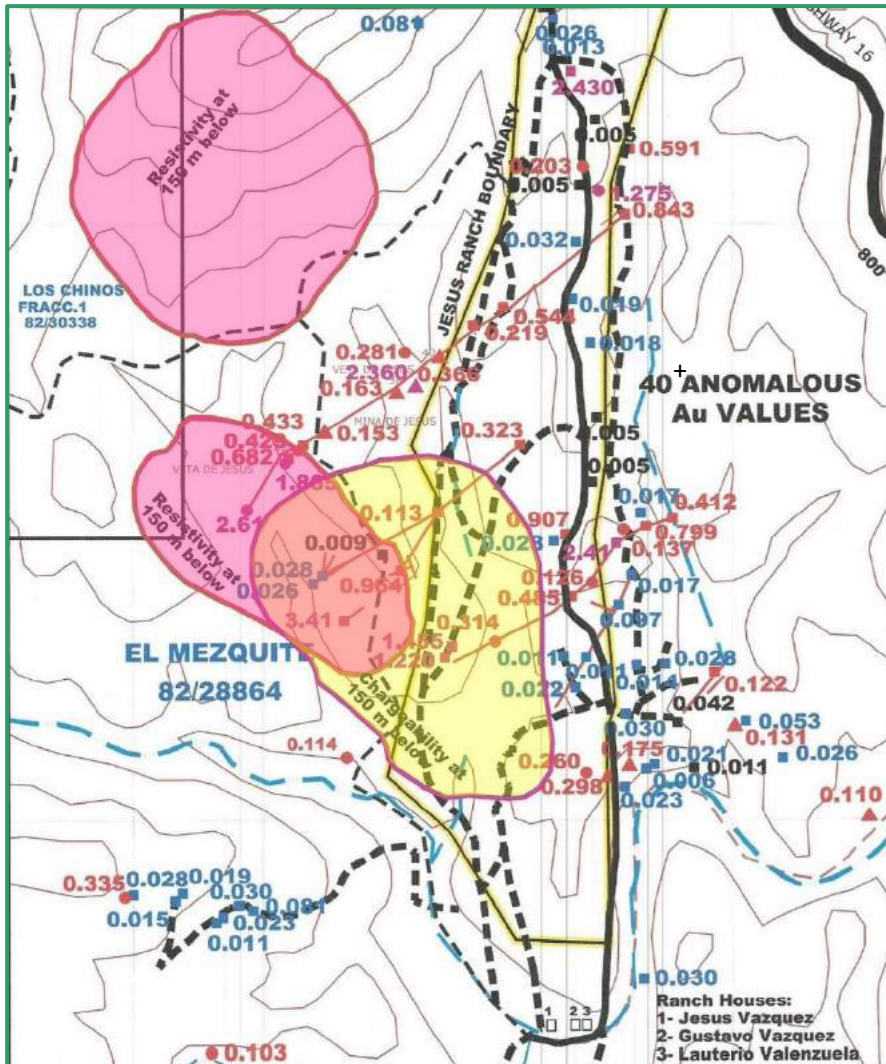
El Mezquite - Surface Alteration

TSX Venture: SSE

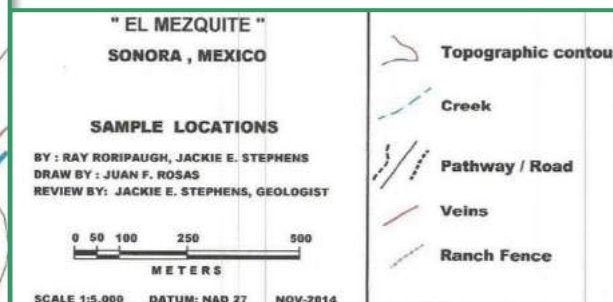


El Mezquite - Exploration Plans

TSX Venture: SSE



- ✓ GIS Compilation
- ✓ Detailed geological mapping
- ✓ Structural and lineament mapping
- ✓ Rock and trench sampling
- ✓ Rock hyperspectral analysis
- ✓ Drilling - Phase 1 1,000m -1,500m



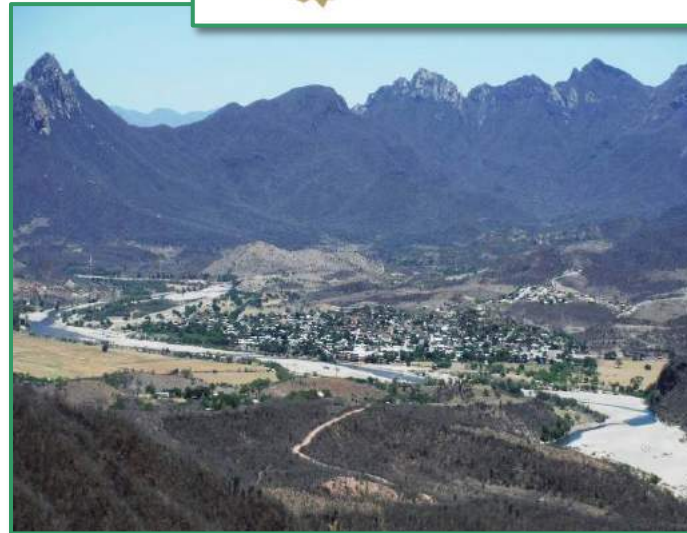
***Pino de Plata
Ag-Au Project,
Chihuahua,
Mexico***



Pino de Plata - The Property

TSX Venture: SSE

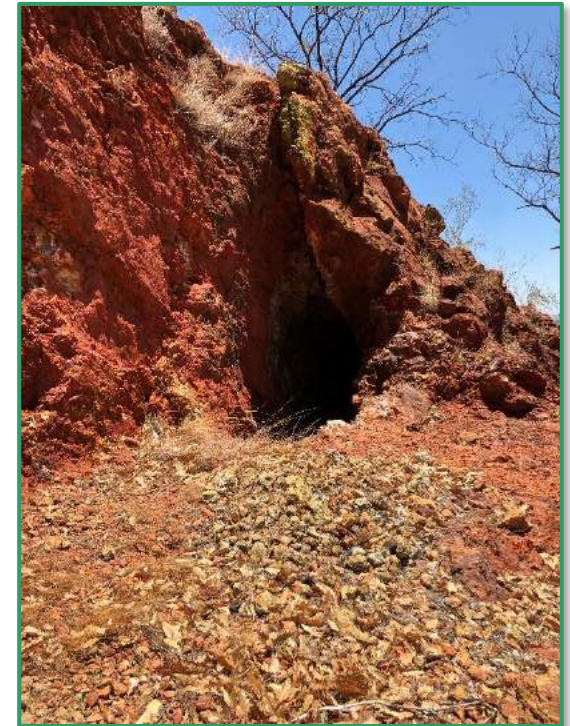
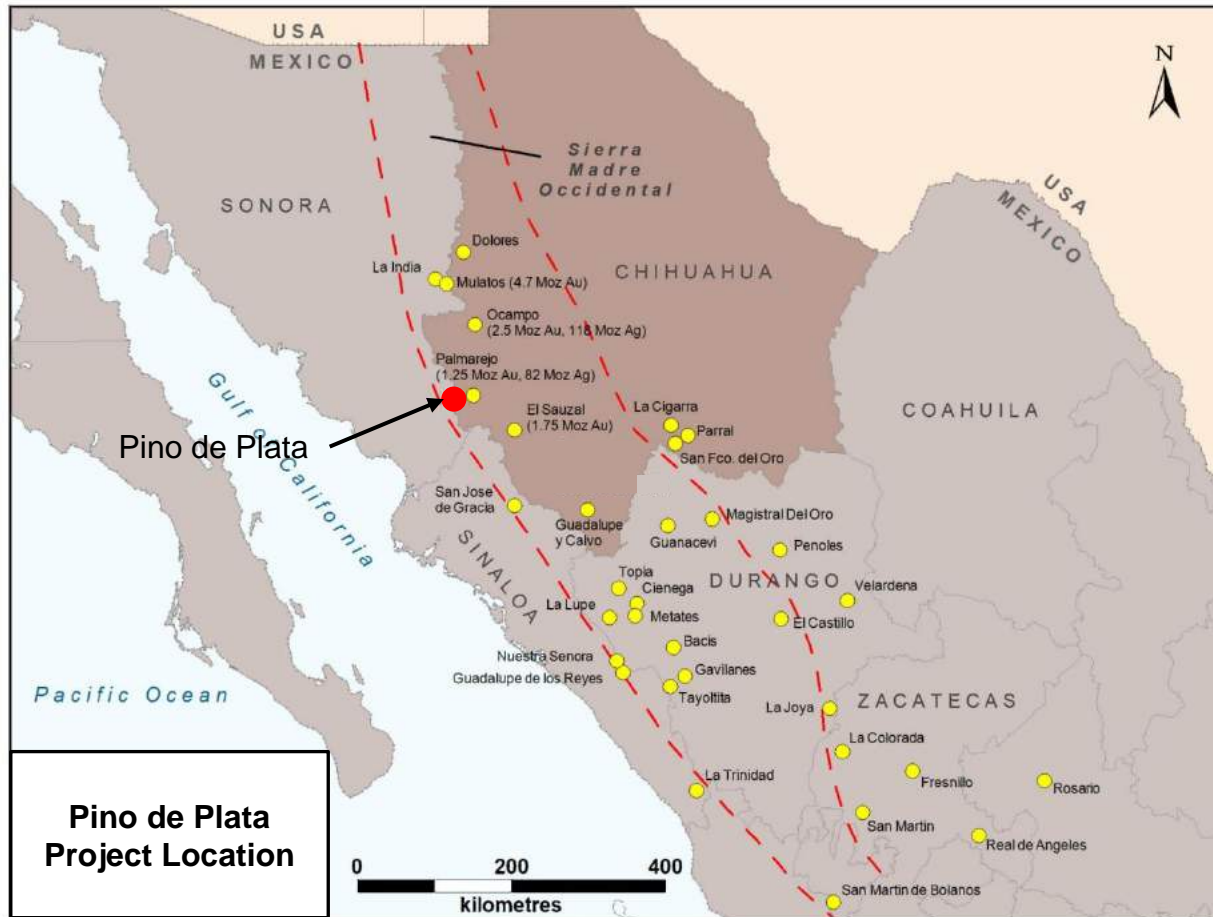
- ✓ Located 15 km away from Coeur Mining's flagship Palmarejo Mine in Chihuahua, Mexico
- ✓ Four road-accessible concessions comprising 397 hectares in the heart of the Sierra Madre Occidental gold-silver belt
- ✓ Our Exploration Target is to develop 100 million ounces of silver
- ✓ Definitive Purchase Agreement for 100% interest
- ✓ Exploration license is in place
- ✓ Permitting for 30 drill pads approved



Project Location

Sierra Madre Occidental - Sonora

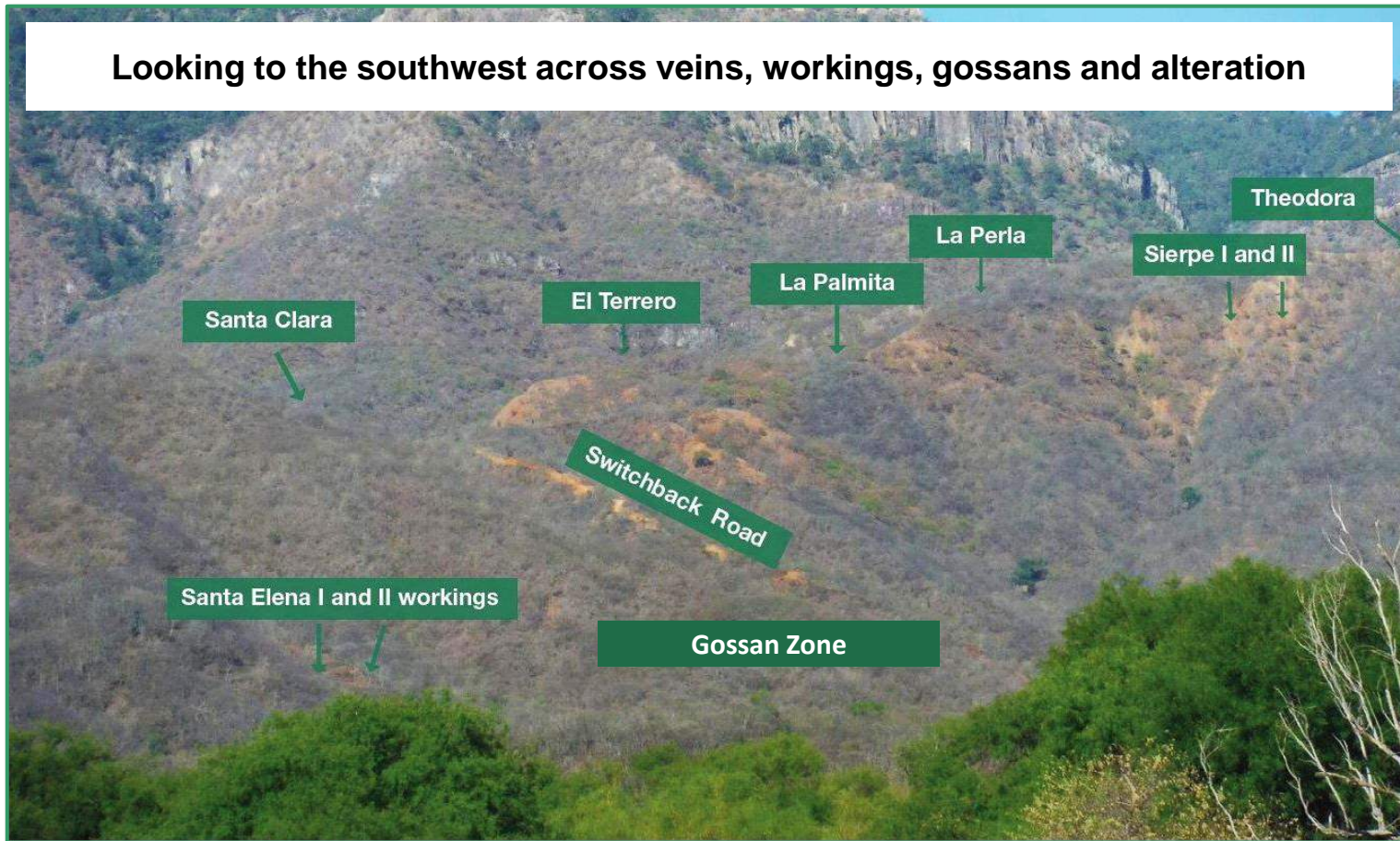
TSX Venture: SSE



Pino de Plata - Principal Targets

TSX Venture: SSE

Looking to the southwest across veins, workings, gossans and alteration



Pino de Plata - SSE 2019 Exploration

TSX Venture: SSE

- ✓ **Twelve targets were identified for immediate Phase I drill testing.**
- ✓ Targets include gossans in the Gossan zone, skarn/replacements at Santa Elena, the El Terrero mine target, the la Perla vein and associated alteration zone, the Santa Clara vein, the Theodora vein, the Sierpe veins and associated alteration, and the newly defined Muro vein.
- ✓ El Terrero and Gossan are large oxide targets with potential for encountering wide zones of mineralization.
- ✓ The Terrero target is a relatively flat-lying body with multiple structures associated with strong argillic alteration, abundant iron oxides and jarosite.
- ✓ Surface exposures and dumps have yielded high silver and base metal values, and similar assays were reported by the government geological survey from underground workings.



Pino de Plata - El Terrero Epithermal Target

TSX Venture: SSE

- ✓ Disseminated epithermal mineralization in strongly argillized igneous rocks contains high grade silver at surface.
- ✓ Seven out of nine samples >1 oz/t (31.25 g/t) Ag and up to 17.8 oz/t (557 g/t) Ag.
- ✓ Terrero Vein sampled in 2019 by ProDeMin 1130 g/t Ag with 3.72% Pb for 1278 g/t AgEq.



Pino de Plata - SSE 2019 Exploration

TSX Venture: SSE

- ✓ The Santa Elena gossan area presents a viable target for replacement Ag-Pb-Zn-Cu deposits. Unoxidized replacement mineralization from the Santa Elena Mine approaches 6.4 opt (200 g/t) Ag.
- ✓ The gossans have elevated base metal values related to oxidation of structurally-controlled replacement mineralization.
- ✓ The Sierpe I & II and Theodora veins are open on strike and have indications of high grade Ag >8 opt (250 g/t) Ag with strongly altered wall rock, high iron content and comprises a large target that surrounds the vein.
- ✓ Newly exposed, Ag-mineralized quartz veins in road cuts to the west along with favorable alteration west of the Sierpe and Theodora mines make these attractive vein targets.
- ✓ Similar alteration west to La Perla and Sierpe, northeast towards Santa Clara indicates potential for extending mineralization along strike.



Pino de Plata - Gossan and Vein Targets

TSX Venture: SSE



Rock sampling at Gossan Zone

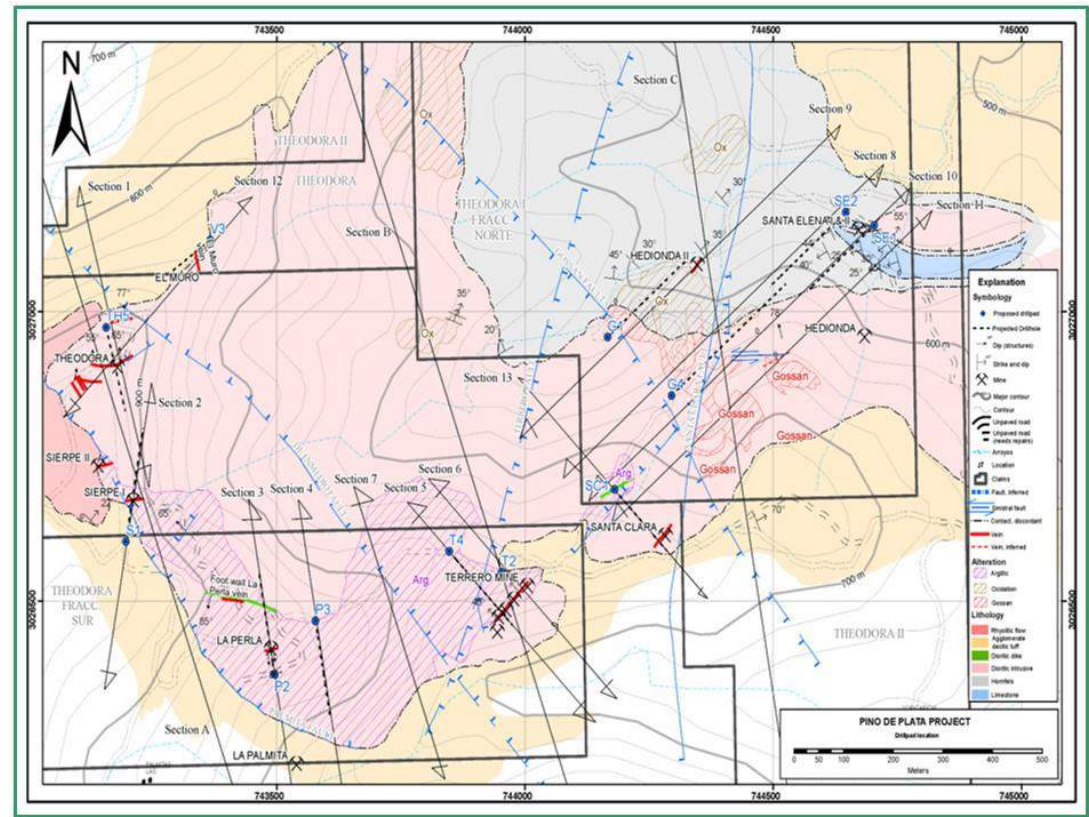


Rock sampling at La Perla Vein

Pino de Plata - Exploration Plans

TSX Venture: SSE

- ✓ GIS Compilation
- ✓ Detailed geological mapping
- ✓ Structural and lineament mapping
- ✓ Rock and trench sampling
- ✓ Rock hyperspectral analysis
- ✓ Drilling - Phase 1 20-30 sites, permitted, 1,500m to 2,000m



TSX Venture: SSE

***Melchett Lake
Zn-Au-Ag-Cu-Pb
VMS Project,
Ontario, Canada***



Melchett Lake - The Property

TSX Venture: SSE

- ✓ The Melchett Lake Property consists of 190 single cell mineral claims and two multi-cell mineral claims located in Thunder Bay Mining District of northwestern Ontario, Canada.
- ✓ The Property lies 110 km north of Geraldton, Ontario and 60 km north of Nakina at 50°45' north latitude and 86°59' west longitude.



Melchett Lake - Summary

TSX Venture: SSE

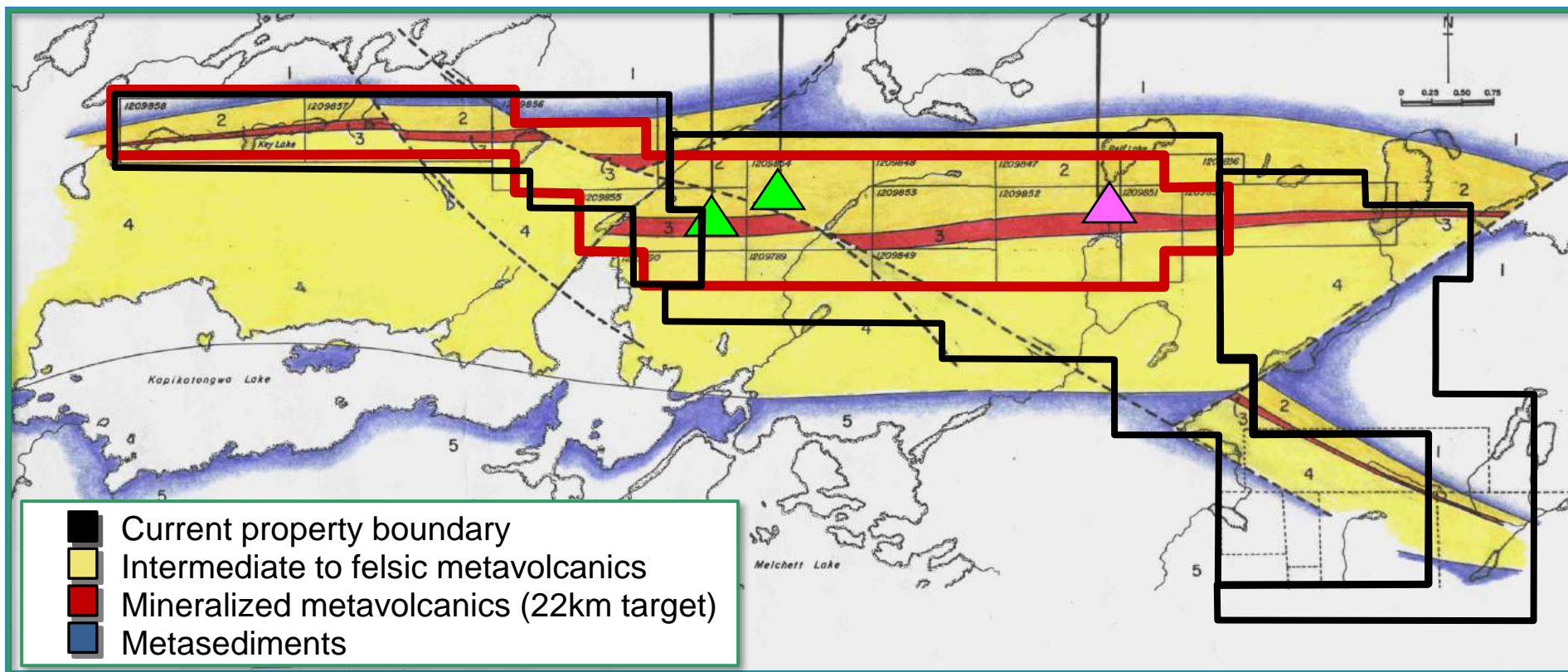
- ✓ Multi-kilometre strike length of the known target areas of mineralization
- ✓ Broad intervals of mineralization
- ✓ High grade values of both precious metals and base metals
- ✓ Zinc to 19.1%, Silver to 560 g/t, Gold to 28.8 g/t
- ✓ Significant potential for massive sulphide and gold deposits
- ✓ New staking covers 20 kilometres of favourable mineralized horizons
- ✓ Permits in place for drilling surface and downhole anomalies
- ✓ Untested coincident geological, geochemical and geophysical targets
- ✓ Opportunity to grow resource in strong Gold, Silver and Zinc markets



Melchett Lake - Historical Geology Map

TSX Venture: SSE

Melchett Lake historical claims (red), geology and mineral occurrences



Melchett Lake - Relf Zone

TSX Venture: SSE

2019 Relf Zone - main trench area looking NNE across structural fabric



Melchett Lake - Relf Zone

TSX Venture: SSE

2019 - heavy gossan in sulphide zone, dark ferroan sphalerite lens



Melchett Lake - Relf Zone

TSX Venture: SSE

Relf Zone rock sampling from main trench area - Davison 1983, 1984

Sample	Target	Zinc ppm	Lead ppm	Copper ppm	Silver ppm	Gold ppb	Zinc %	Silver g/t
A-244	Relf	>10000	5400	1900	>100	78	7.03	120.7
A-245	Relf	>10000	5600	3500	>100	900	8.65	133.7
A-246	Relf	>10000	>10000	2600	>100	110	7.97	181
A-247	Relf	>10000	5500	7000	>100	1700	6.19	160.2
A-248	Relf	>10000	3700	3200	>100	250	8.65	133.7
A-249	Relf	>10000	1900	2100	64	97	10.3	
A-250	Relf	>10000	1500	620	11	34	4.23	
A-253	Relf	>10000	300	610	7	84	5.13	
A-923	Relf	>10000	2480	1420	62	70	NR	
A-925	Relf	>10000	645	2120	29	57	NR	
A-926	Relf	>10000	420	2500	23.2	15	NR	



Melchett Lake - Relf Zone

TSX Venture: SSE

Relf Zone rock sampling from main trench area - Redbird 1997

Sample No.	Zinc %	Lead %	Copper %	Silver g/t	Gold g/t
1061	12.90	1.920	0.288	552	0.020
1062	2.63	0.870	0.116	254	0.012
1063	2.77	0.356	0.164	157	0.037
1064	11.60	0.866	0.507	278	0.028
1065	16.80	2.400	0.075	655	0.018
1066	8.26	0.330	0.972	170	0.025
1067	11.10	1.300	0.142	394	0.022
1068	9.88	0.558	0.154	179	0.035



Melchett Lake - Exploration Plans

TSX Venture: SSE

- ✓ GIS Compilation
- ✓ Re-Interpret BHPEM, HeliTEM and Regional Magnetic Surveys
- ✓ Prospecting, Soil and Rock Geochemistry, Alteration
- ✓ Targeted geological mapping
- ✓ Structural and lineament mapping
- ✓ Trench sampling
- ✓ Drilling - Phase 1 Au and Ag-Zn, permitted, 1,000m - 1,500m



Silver Spruce Resources Inc.

TSX Venture: SSE, USA: SSEBF, Frankfurt: S6Q



Suite 802-Sun Tower, 1550 Bedford Highway,
Bedford, Nova Scotia, B4A 1E6 Canada

1-902-430-8270

1-866-641-3397

info@silverspruceresources.com

www.silverspruceresources.com

