



EXPERIENCE • VISION • VALUE



ANNUAL GENERAL MEETING Dartmouth, N.S.

APRIL 2, 2013

TSXV: SSE

Safe Harbour Statement

TSXV: SSE

Investors are cautioned that, except for statements of historical fact, certain information contained in this document includes "forward-looking information" with respect to a performance expectation for SSE. Such forward-looking statements are based on current expectations, estimates and projections formulated using assumptions believed to be reasonable and involving a number of risks and uncertainties which could cause actual results to differ materially from those anticipated. Such factors include, without limitation, fluctuations in foreign exchange markets, the price of commodities in both the cash market and futures market, changes in legislation, taxation, controls and regulations of national and local governments and political and economic developments in Canada and other countries where SSE carries-out or may carry-out business in the future, the availability of future business opportunities and the ability to successfully integrate acquisitions or operational difficulties related to technical activities of mining and reclamation, the speculative nature of exploration and development of mineral deposits located, including risks in obtaining necessary licences and permits, reducing the quantity or grade of reserves, adverse changes in credit ratings, and the challenge of title. The Company does not undertake an obligation to update publicly or revise any forward-looking statements or information, whether as a result of new information, future events or otherwise, unless so required by applicable securities laws.



Big Easy – Location

TSXV: SSE

- Island of Newfoundland - East Coast
- 2 hrs. from St. John's / 20 minutes from Clarenville
- 5 km off Trans Canada Highway – Road accessible
- Power line passes through property

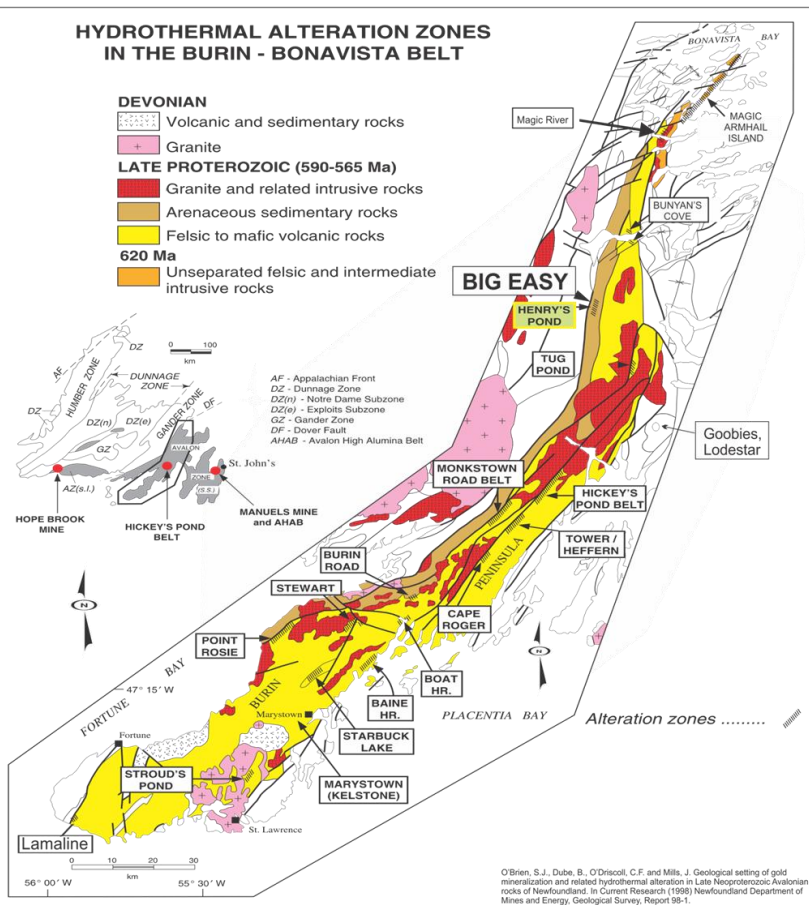


Big Easy Prospect – Regional Model

- Northern extension of the 275 km Burin Peninsula high sulphidation belt
- BE Mineralization hosted in silicified sedimentary units near faults

Growing Recognition as a Significant District

- Silver Spruce's exploration and drilling
- work by NL Geological Survey / Memorial
- Exploration by TerraX – 40 Creek prospect
- Recent discoveries by prospectors in the southern part of the belt - Lamaline Area



Big Easy – Gold Silver Prospect

- Big System - pervasive alteration / mineralization
- 294 Claims - subject to 3% NSR (buyback of 1.5%)
- Classic epithermal style gold / silver prospect
- Core area -1.7 km strike x 300-500m wide
- Potential strike length of 5 km plus



ET zone



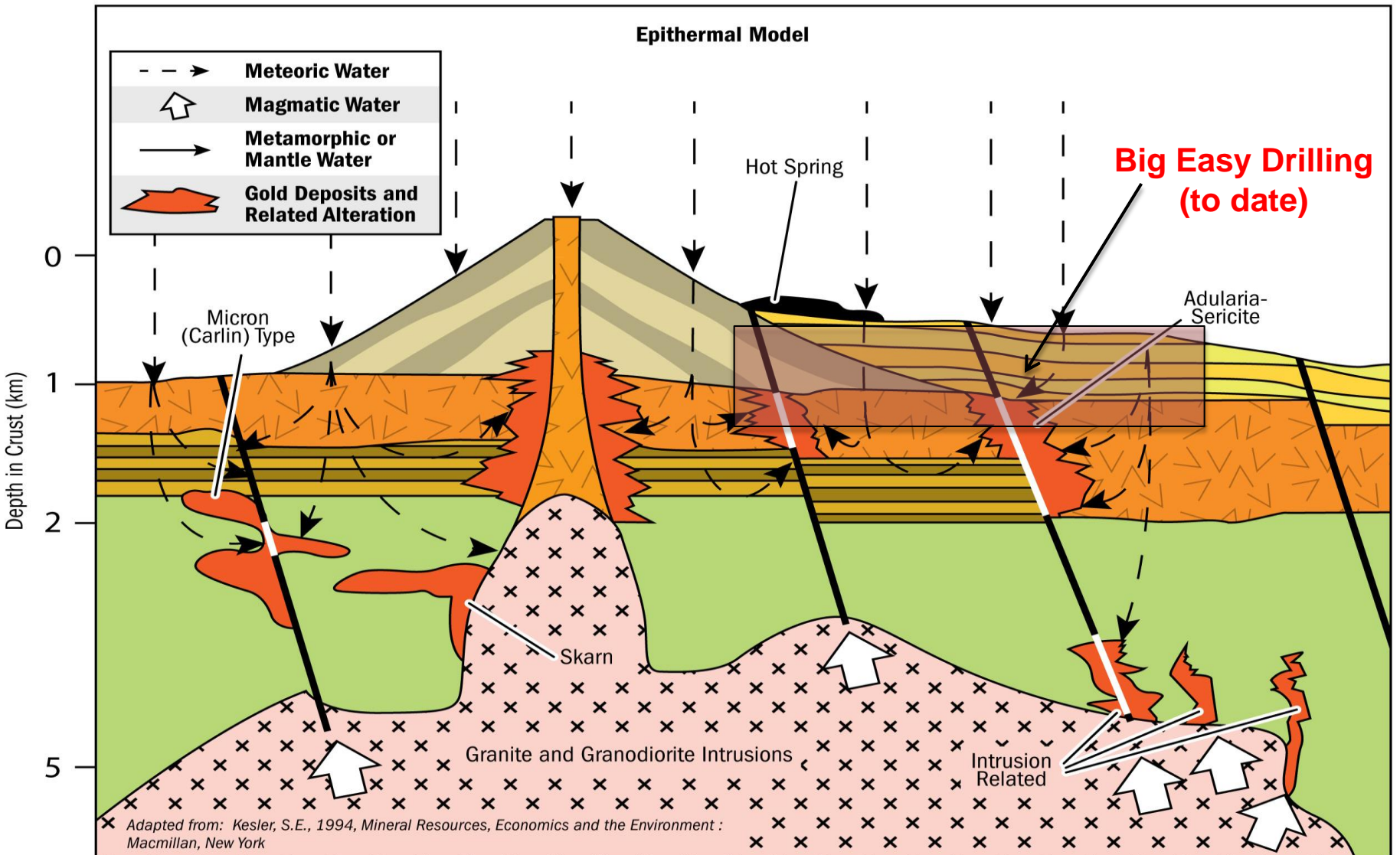
BE Sinter

Big Easy – Looking North

TSXV: SSE



Epithermal Model



Big Easy – Exploration History

2010 Program

- Geology / Prospecting
- Trenching – 6 trenches
- Geophysics - IP

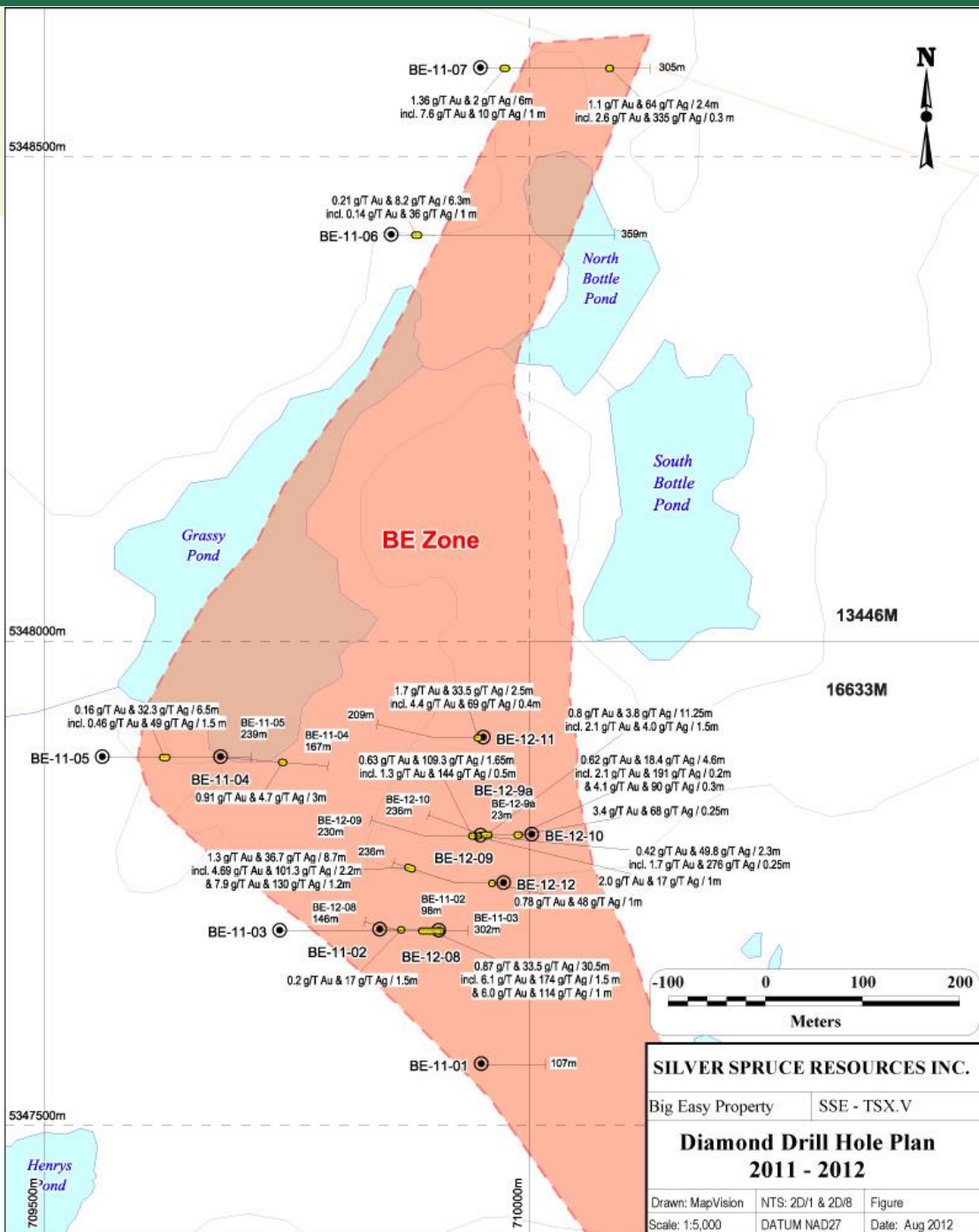
2011 - Phase I Drilling Program

- 7 holes / 1577m
- 1.2 km strike length

Phase II Drilling – 2012

- 5 holes / 1080m
- 200 m strike length





SILVER SPRUCE RESOURCES INC.		
Big Easy Property	SSE - TSX.V	
Diamond Drill Hole Plan 2011 - 2012		
Drawn: Map/Vision	NTS: 2D/I & 2D/B	Figure
Scale: 1:5,000	DATUM NAD27	Date: Aug 2012



Big Easy – 2011 Drilling

- 7 DDH - 1577m, 1.2 km strike length, max 365m / 276m TVD
- Test alteration, IP, surface geology / rock samples
- Best intersections deep – brecciated veins / silicified pyritic breccia
 - 6 g/t Au / 174 g/t Ag over 1.5m
 - 2.5 g/t Au / 74 g/t Ag over 7m
 - 0.87 g/t Au / 33 g/t Ag over 30m
- All holes intersected gold/silver mineralization



What We Learned

- Large / Extensive System – alteration pervasive, continues to depth
- Gold/Silver in epithermal veins and breccias
- Classic epithermal textures - chalcedonic quartz, calcite blading (boiling)
- Structural information on vein orientations

Big Easy – 2012 Drilling

- 5 DDH - 1080m, 200m strike length, max - 230m / 199m TVD
- Test zone in area of best 2011 DD intersection in BE-11-3
- Test structural input on vein orientation – drill west
- Structural and mineralogical information
- Abundant narrow quartz adularia (QA) veins
 - BE-12-9 - 5.65-5.9m (0.25m) - 276 g/T Ag, 1.73 g/T Au
 - BE-12-10 30.7-30.9m (0.2m) - 191 g/T Ag, 2.11 g/T Au
- Wider zones of brecciated QA veins
 - BE-12-12 – 200.1-208.8 (8.7m) – 36.5 g/T Ag / 1.3 g/T Au



What We Learned

- Confirmed vein orientations - intersected more veins at better CA's
- Better understanding of location in the epithermal system
 - quartz / adularia veins
 - native silver / electrum noted
 - crustiform vein textures

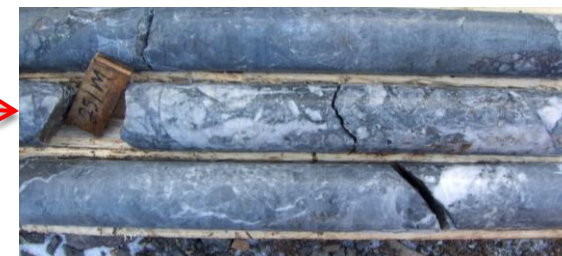
Big Easy – DD Highlights

TSXV: SSE

Hole # (TV Depth)	Length m	Au g/t	Ag g/t
BE 11-3 (231 m)	30.5	0.87	33
incl	7.0	2.5	74
incl	1.5	6.1	174
incl	1.0	6.0	114
BE 11-5 (176 m)	6.5	0.16	32.2
incl	1.5	0.46	49
BE 11-7 (247 m)	6.0	1.4	2
incl	1.0	7.6	10
BE 12-9 (199 m)	2.3	0.42	49.8
incl	0.25	1.73	276
incl	1.65	0.63	109.3

Notes: Hole #7 is 900m north of BE -11-3 , holes 4 and 5 too short to test to depth

BE-11-3



BE-12-9



Big Easy – Drilling Highlights

TSXV: SSE

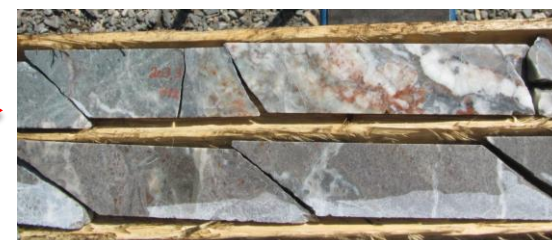
BE-12-11



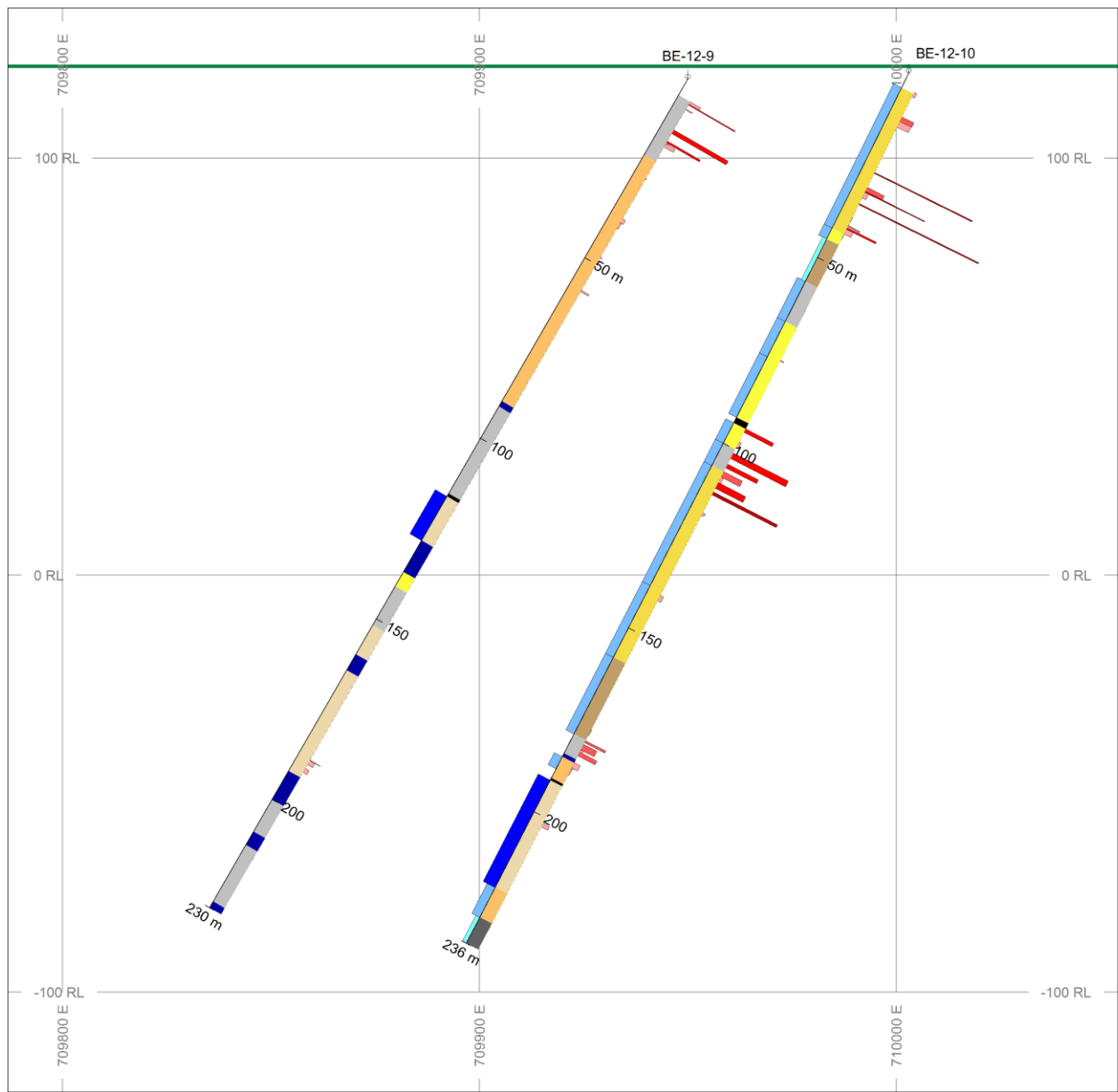
Hole # (TV Depth)	Length m	Au g/t	Ag g/t
BE-12-10 (209m)	4.6	0.62	18.4
incl	0.2	2.11	191
incl	0.3	4.1	90
and	11.3	0.8	3.8
BE-12-11 (177m)	2.5	1.7	33.5
incl	0.4	4.39	69
BE-12-12 (202m)	8.7	1.3	36.7
incl	2.2	4.6	101
incl	1.2	7.9	130



BE-12-12

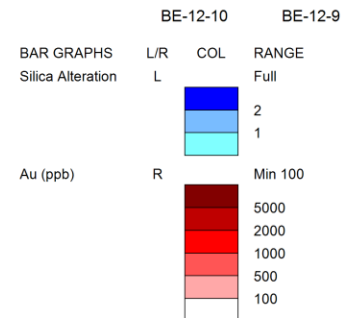


Notes: BE-11-1 to 7 drilled to E, BE-12-8 to12 drilled to W



HOLES PLOTTED

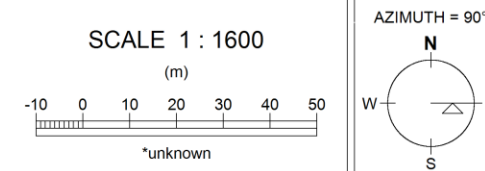
TOTAL 2



ROCK CODES	PAT	LABEL	DESCRIPTION
Lithology		OB	Overburden
	3c		Mafic Dyke
	5a		Shale
	5c		Siltstone
	5d		Siltstone-Sandstone
	5e		Siltstone-sandstone-conglomerate
	6a		Sandstone-Conglomerate
	6b		Conglomerate
	7a		Sandstone
	ft		Fault

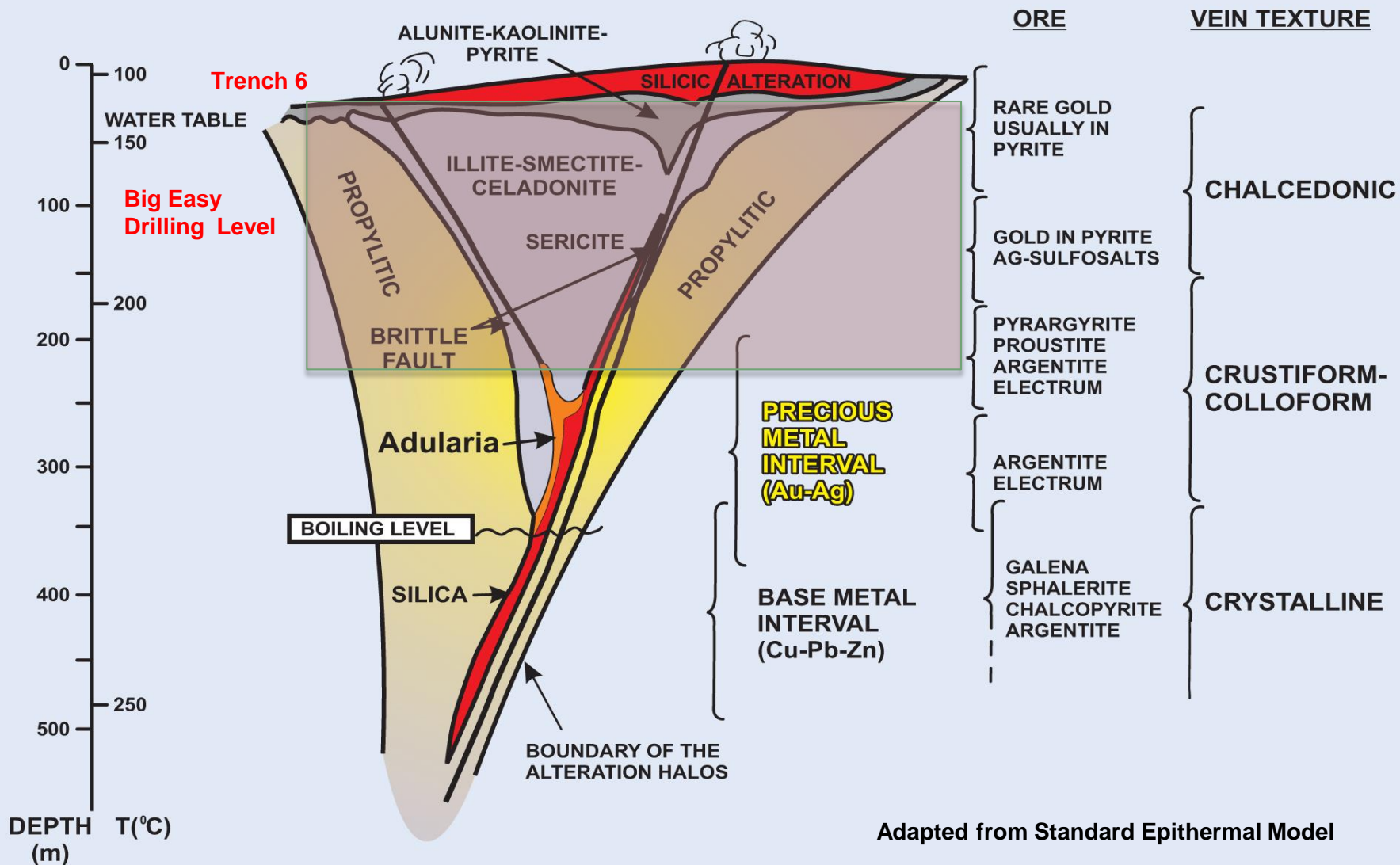
SECTION SPECS:

REF. PT. E, N	709920 m	5347810 m
EXTENTS	266.2 m	260 m
SECTION TOP, BOT	136 m	-124 m
TOLERANCE +/-	11.81 m	



Silver Spruce Resources
Big Easy Property
L7800N
BE-12-09, BE-12-10

Big Easy Model

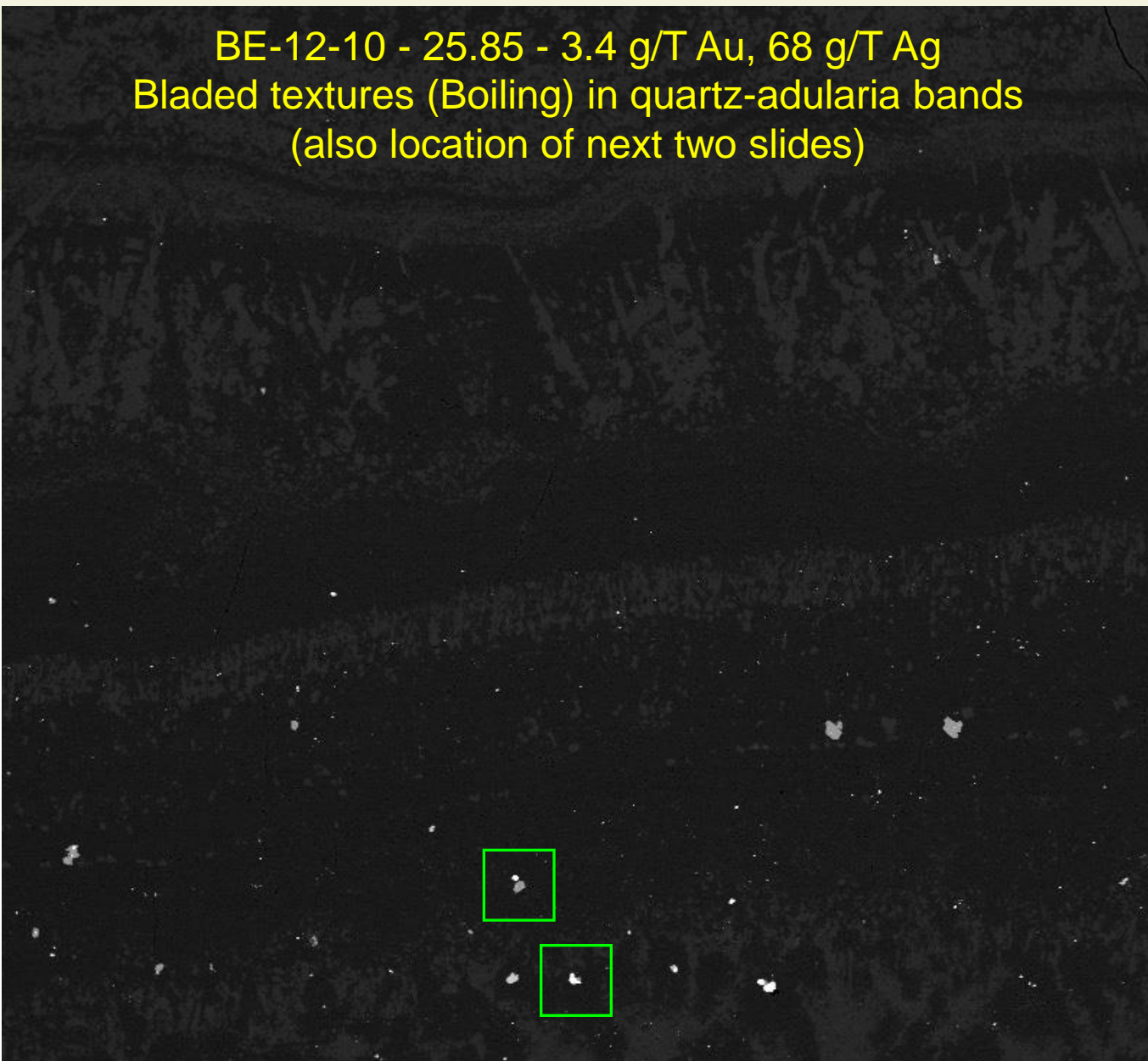


Colloform banded vein w/ blades (boiling textures)
BE-12-10 - 25.85 - 3.4 g/T Au, 68 g/T Ag



5 mm

BE-12-10 - 25.85 - 3.4 g/T Au, 68 g/T Ag
Bladed textures (Boiling) in quartz-adularia bands
(also location of next two slides)

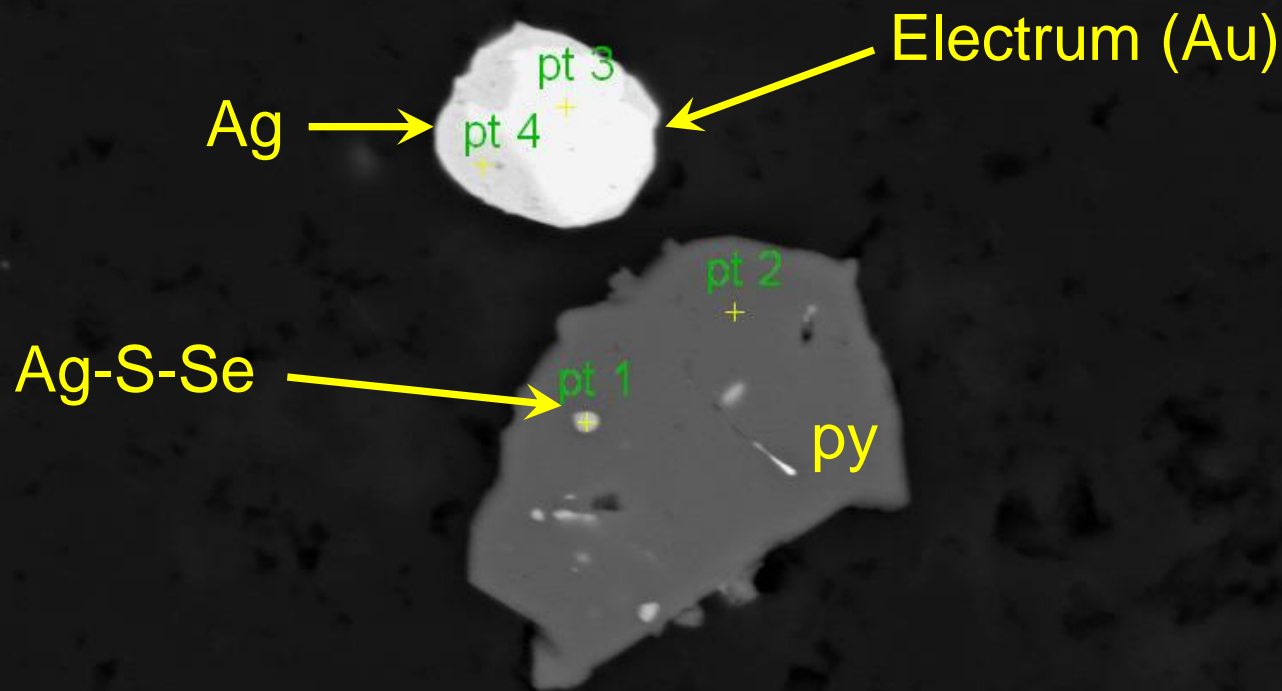


BSE MAG: 112 x HV: 25.0 kV WD: 15.1 mm

500 μ m



BE-12-10 - 25.85 - 3.4 g/T Au, 68 g/T Ag
V. pure native Ag; Au rich electrum



20 μ m

BSE MAG: 3544 x HV: 25.0 kV WD: 15.1 mm



BE-12-10 - 25.85 - 3.4 g/T Au, 68 g/T Ag
V. pure native Ag; acanthite; Se peaks - mixed phase ?

acn

pt 2

acn(Cu)

pt 3

pt 1

Ag

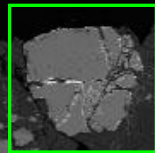
8 μ m

BSE MAG: 7145 x HV: 25.0 kV WD: 15.1 mm



DDH BE-11-3; 242.13-242.24m

Pyrite grain breccia fragment
veined / mineralized from below ???



400 μ m

BSE MAG: 137 x HV: 25.0 kV WD: 14.8 mm



DDH BE-11-3 - 242.13-242.24m

Pyrite grain breccia fragment
veined / mineralized
from below ???

py

pt 4
+

Ag

electrum(Au)

pt 2

pt 3

acn

pt 1

py

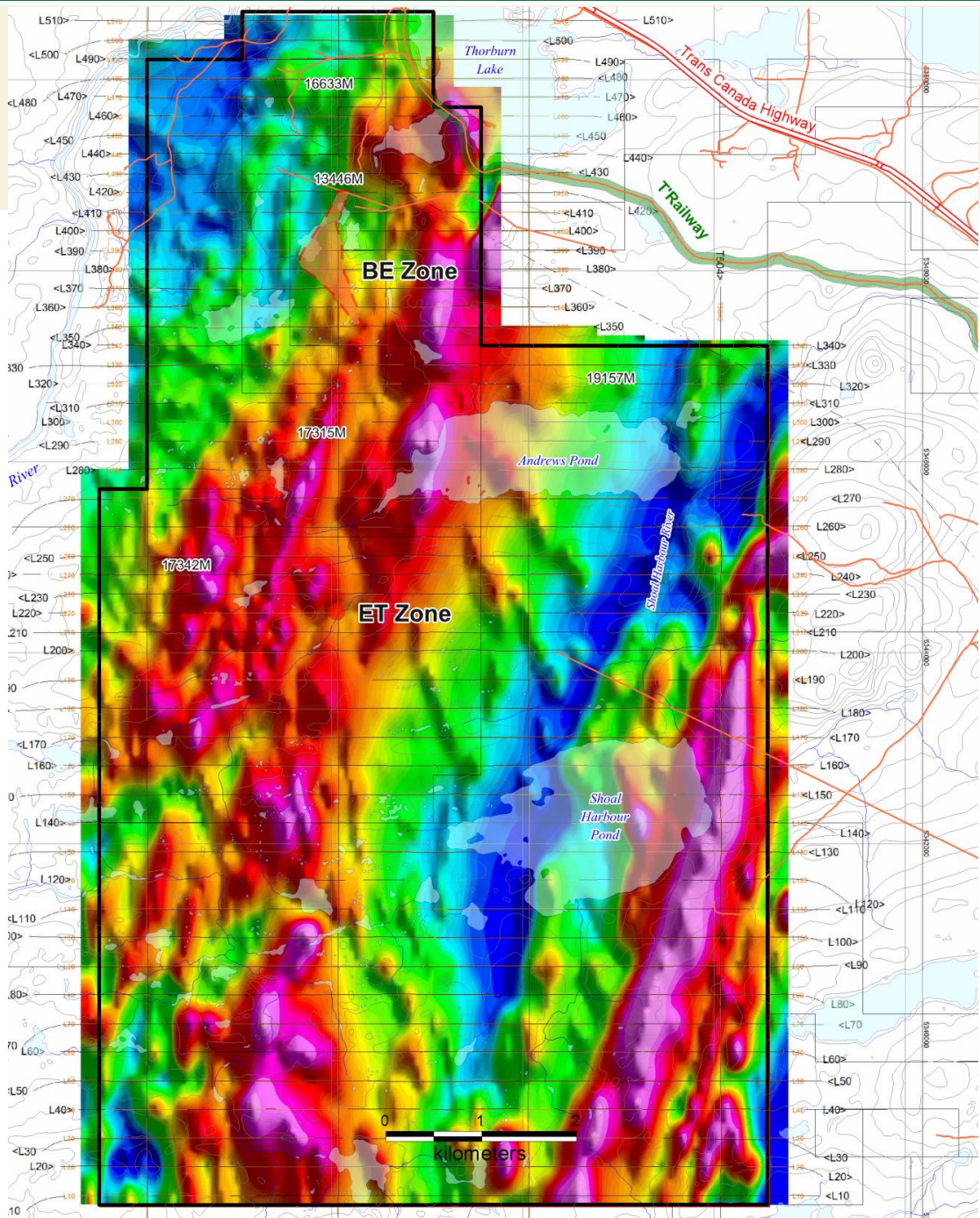
py

electrum

30 μ m

MAG: 2188 x HV: 25.0 kV WD: 14.8 mm





Big Easy Zone – look S



ET zone



Big Easy – 2012 / 2013

2012:

- Airborne Survey - High Resolution Magnetic / VLF-EM
- 3D Compilation - Caracle Creek Int. Consulting
- Mineralogical Studies - Research partnership – MUN / GSNL

Proposed 2013:

- Deep Penetration Ground Geophysics - \$300,000
 - IP / MT Survey – Titan 24
- Phase 3 drill program – 2500m - \$600,000
 - Testing deep targets
- Exploration along BE – ET trend - \$100,000
 - Prospecting, geochemistry, geophysics



A serene landscape photograph capturing a sunset over a calm body of water. The sun is positioned low on the horizon, partially obscured by a dark silhouette of a forest. The sky is filled with wispy, golden clouds, and the sun's light creates a bright lens flare effect. The water in the foreground is still, reflecting the warm colors of the sunset. On the left side, the dark silhouette of a large evergreen tree is visible, framing the scene. The overall mood is peaceful and natural.

Thanks to: Memorial University of NL, RDC NL,
Dr. Graham Layne, Matthew Clarke

TSXV: SSE

www.silverspruceresources.com