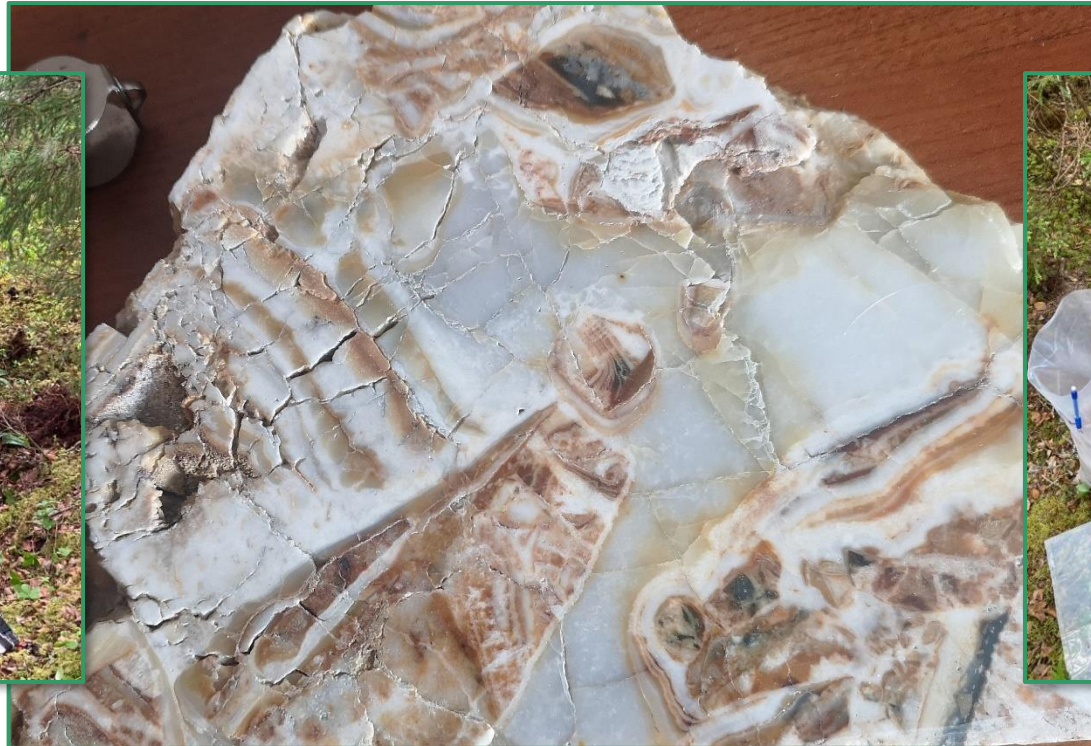


“Seizing Opportunity and Creating Value”



EXPLORING in CANADA **MYSTERY** Au Project

TSX Venture: SSE
US OTCQB: SSEBF
Frankfurt: S6Q

www.silverspruceresources.com

May 2023



Cautionary Statement

TSX Venture: SSE

Investors are cautioned that, except for statements of historical fact, certain information contained in this document includes "forward-looking information" with respect to a performance expectation for SSE. Such forward-looking statements are based on current expectations, estimates and projections formulated using assumptions believed to be reasonable and involving a number of risks and uncertainties which could cause actual results to differ materially from those anticipated. Such factors include, without limitation, fluctuations in foreign exchange markets, the price of commodities in both the cash market and futures market, changes in legislation, taxation, controls and regulations of national and local governments and political and economic developments in Canada and other countries where SSE carries-out or may carry-out business in the future, the availability of future business opportunities and the ability to successfully integrate acquisitions or operational difficulties related to technical activities of mining and reclamation, the speculative nature of exploration and development of mineral deposits located, including risks in obtaining necessary licences and permits, reducing the quantity or grade of reserves, adverse changes in credit ratings, and the challenge of title. The Company does not undertake an obligation to update publicly or revise any forward-looking statements or information, whether as a result of new information, future events or otherwise, unless so required by applicable securities laws.



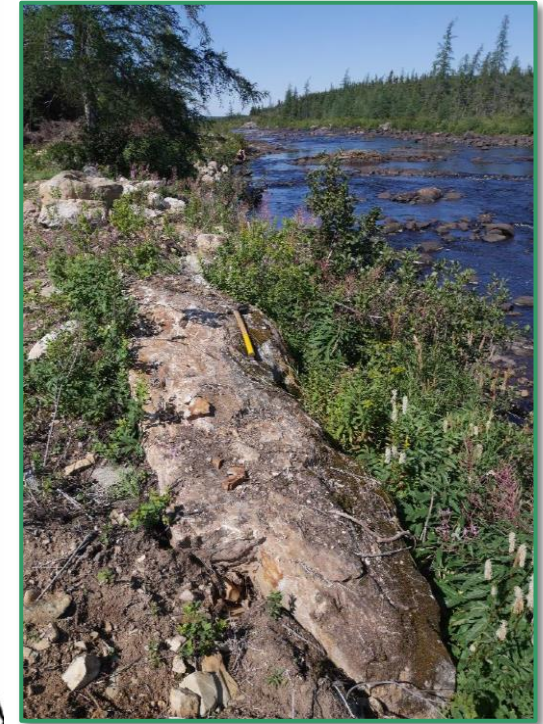
TSX Venture: SSE

***Mystery
Au Project,
Newfoundland
and Labrador,
Canada***



Project Location Map

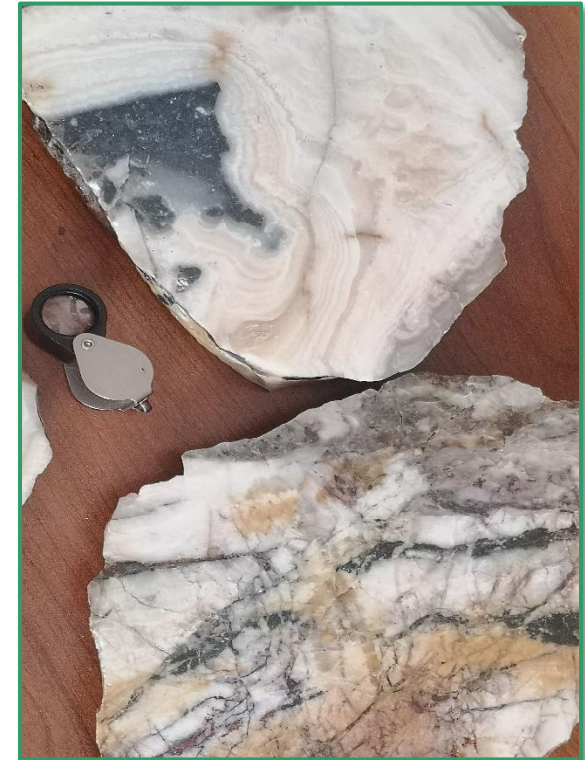
TSX Venture: SSE



Mystery - Project Overview

TSX Venture: SSE

- ✓ Silver Spruce is earning a 100% interest in the **14,790-hectare Mystery, Till and Marilyn** properties. Exploits Subzone Gold Belt in central Newfoundland near Sokoman Minerals and New Found Gold discoveries. Grassroots stage property.
- ✓ Mystery optioned the original 8,750 hectares in 2021 and recently acquired, by staking, contiguous claims covering 6,040 hectares for a total property size of 14,790 hectares.
- ✓ Vendor and due diligence samples mainly 1-3 g/t Au, up to **12.5 g/t Au, with strong As and Sb association**. Structural controls. Laminated to brecciated quartz-carbonate veins.
- ✓ Local and international analogues of epithermal to mesothermal deposits with extensive structurally controlled, locally high to very high grade vein and breccia hosted mineralization reported in nearby properties.



Mystery - The Potential

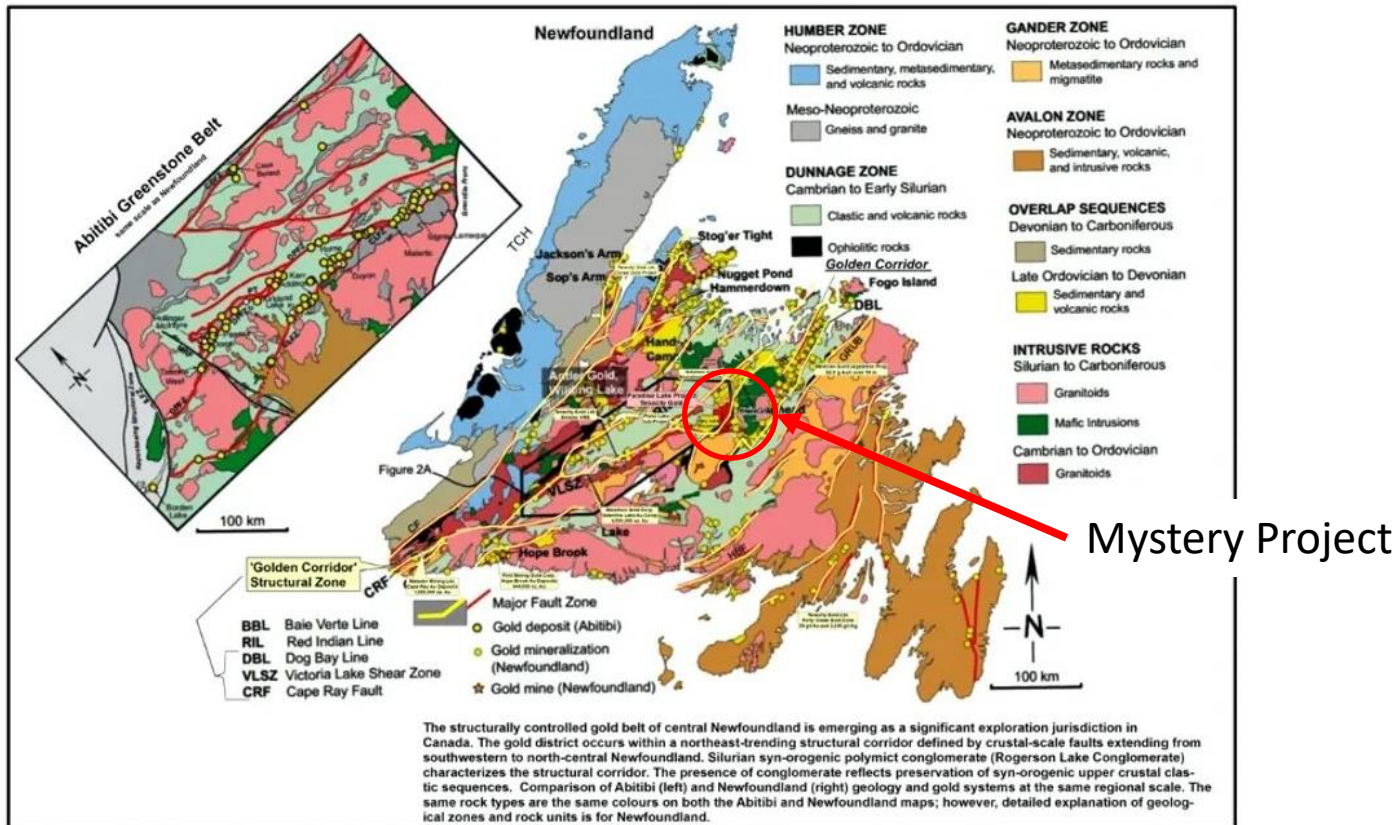
TSX Venture: SSE

- ✓ *Our initial site exploration verified mineral and rock textures common to shallow epithermal and/or orogenic 'mesothermal or lode' vein-style mineralization with Au-As±Sb geochemical association*
- ✓ *Highly anomalous As compared even to known high profile projects*
- ✓ *These key points are consistent with the regional Exploits Gold Belt, Newfoundland discoveries, such as Queensway, and significant global analogues such as Fosterville, Australia*
- ✓ *Multi-million ounce gold resources identified along major structures (e.g., Valentine)*
- ✓ *Beaverbrook Sb Mine west of Queensway*
- ✓ *Newfoundland offers a favorable regulatory environment, supportive communities, outstanding provincial geological survey, near year-round operating conditions, excellent property access and significant potential for new deposits*



Mystery - Regional Gold and Major Structures

TSX Venture: SSE

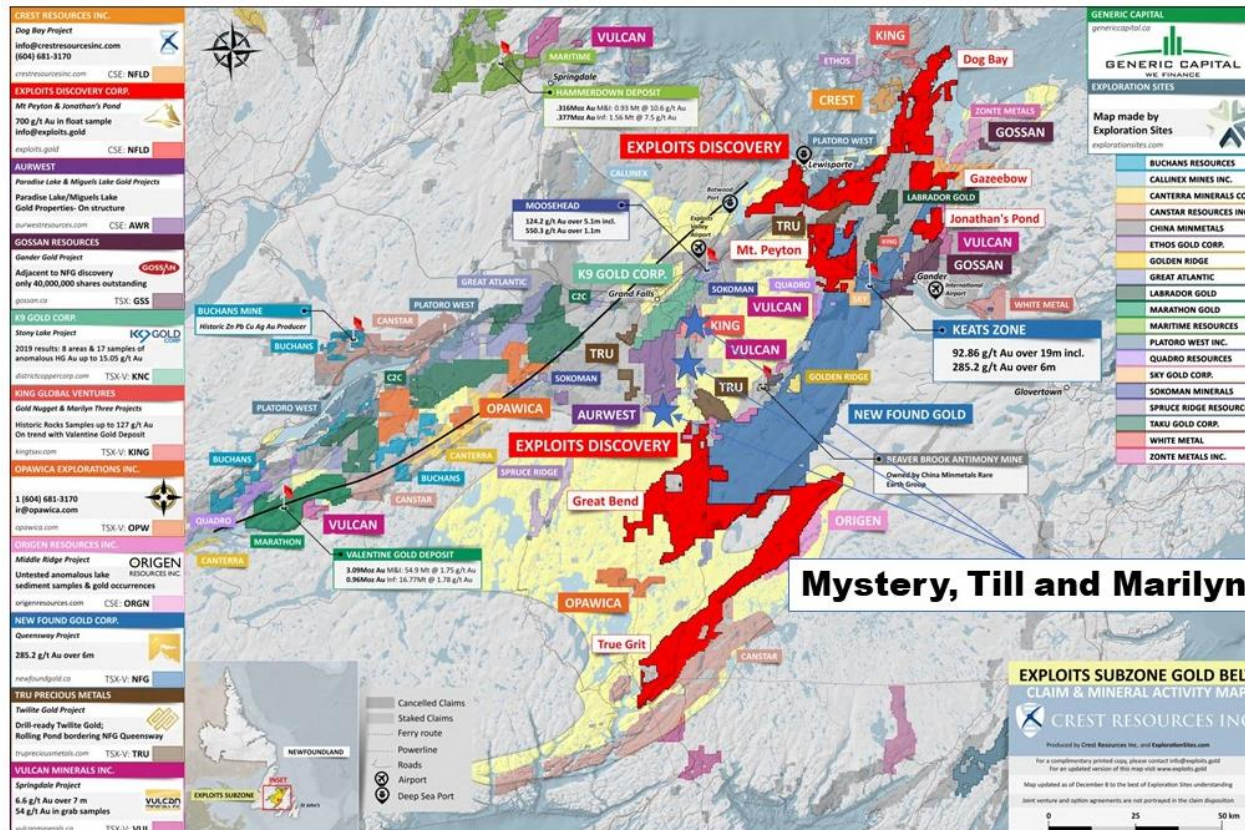


Principal geological zones transecting to the northeast across Newfoundland with major structures noted in yellow and showings and deposits of mesothermal to epithermal gold. See size and style comparison to the Abitibi Greenstone Belt in Ontario and Quebec.



Mystery - Proximity to Regional Gold District

TSX Venture: SSE

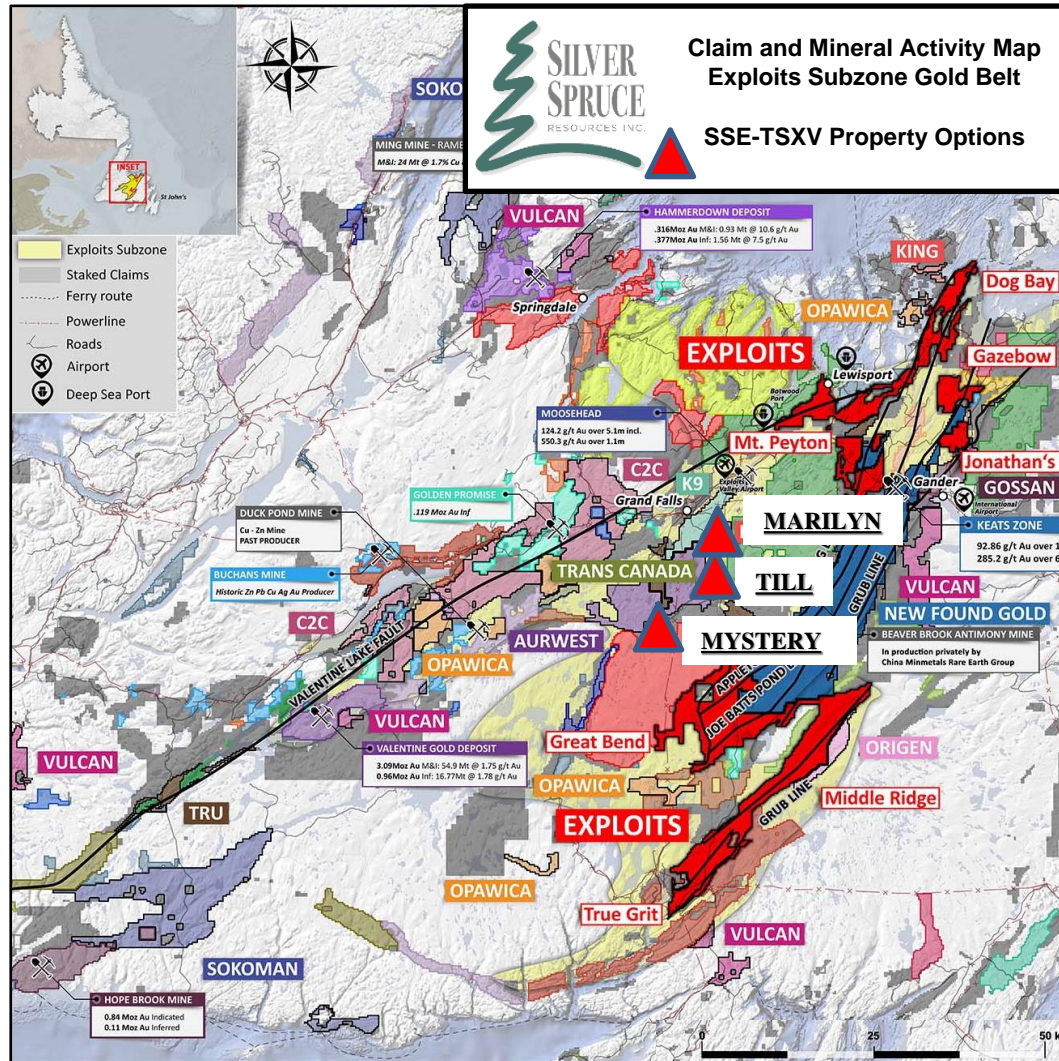


We are located within the Exploits Gold District where major deep seated structural breaks with extensive secondary structures contain numerous mineral occurrences and potential deposits with Au-Sb-As association and silicification common to mesothermal to epithermal gold.



Mystery - Regional Gold District

TSX Venture: SSE



- ✓ Located 20-25 km west of New Found Gold Corp.'s Queensway project and 15-35 km south of Sokoman Minerals' Moosehead gold project, central Newfoundland
- ✓ Strategic location in active exploration camp
- ✓ Proximal to major and secondary structural features defined by geophysical and geological coverage
- ✓ Two road and trail-accessible claim blocks comprising 14,790 hectares



Mystery - The Property

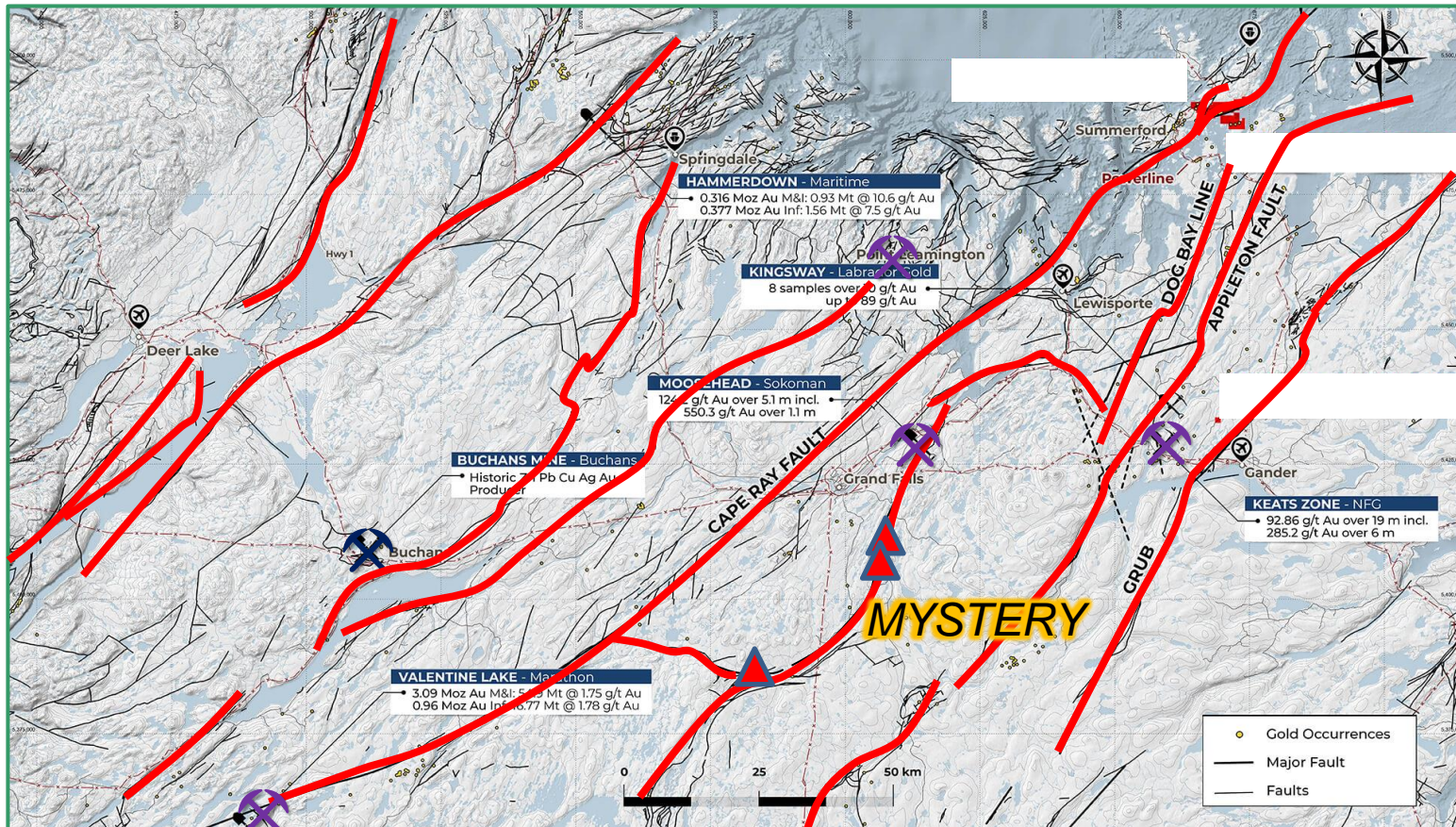
TSX Venture: SSE

- ✓ **Historical rock sampling to 12.5 g/t Au**
- ✓ **Definitive Purchase Agreement for 100% interest signed; due diligence verification assays to 8.0 g/t Au**
- ✓ Additional contiguous claims staked raising footprint to 14,790 hectares.
- ✓ Multiple occurrences are reported of agate chalcedony to colloform and crystalline silica veining, carbonate replacement by quartz, and open-space filling quartz and calcite.
- ✓ Textures indicative of epithermal systems and/or structurally controlled mesothermal vein development analogous to Queensway and similar international deposits



Mystery - Proximity to Regional Structures

TSX Venture: SSE



We are targeting major and minor structural sets, zones showing strike shift, potential dilation, zones of high resistivity associated with silicification, among other indicators of mesothermal to epithermal gold.



Mystery - Exploration and Plans

TSX Venture: SSE

- ✓ **Permitting Q4 2021**
- ✓ **New airborne geophysics Q1 2022**
- ✓ **Gold Grain Till Sampling Q2 2022**
- ✓ **Till Processing and Assays Q3 2022**

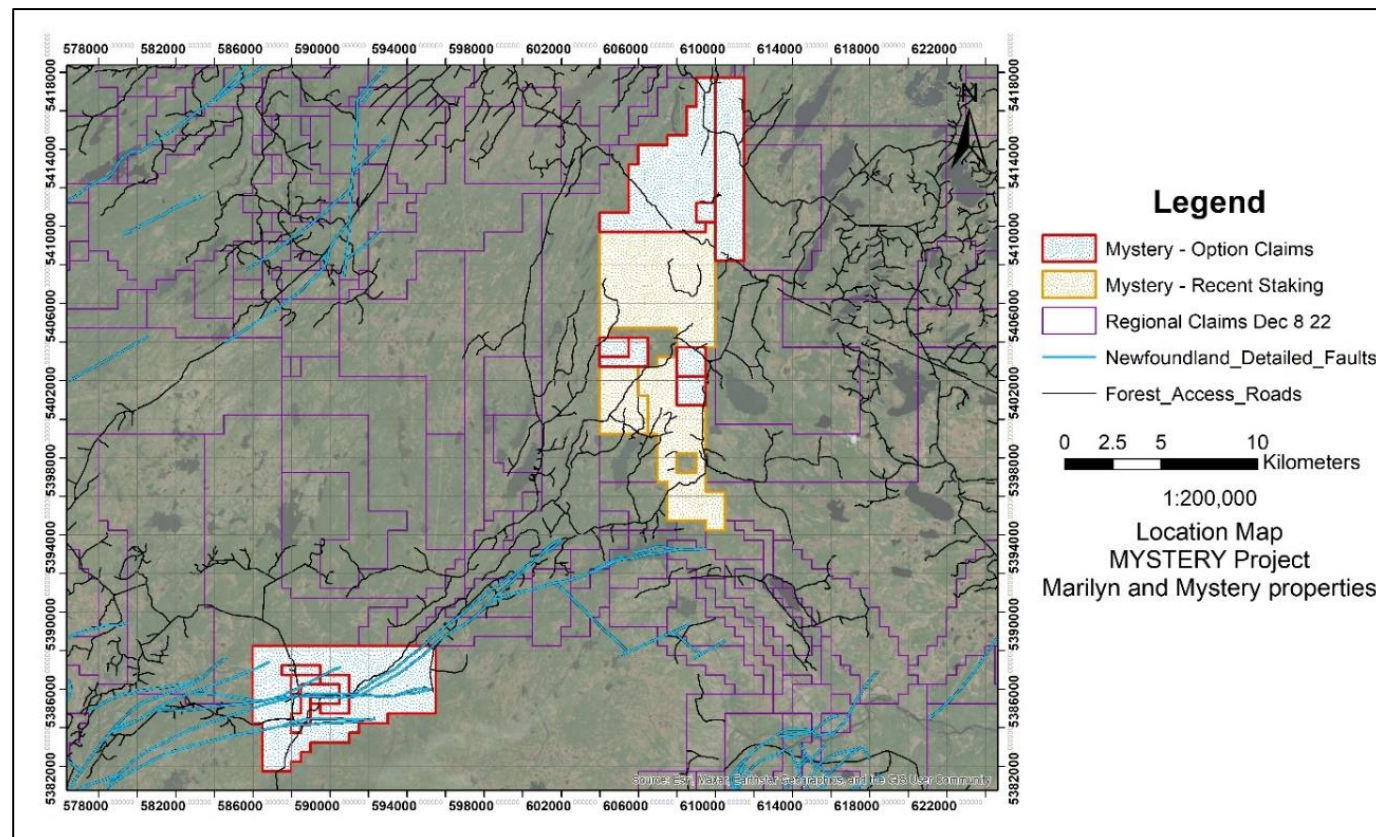
- ✓ GIS Compilation Q4 2021 to Q3 2023
- ✓ Review and Interpretation of Regional and Property Geophysical Surveys Q2/3 2023
- ✓ Structural and Lineament Mapping Q2/3 2023
- ✓ Gold Grain Till Sampling Q2/3 2023
- ✓ Till Processing and Assays Q3/2023
- ✓ Prospecting, Soil and Rock Geochemistry, Alteration, Targeted mapping Q2/3 2023
- ✓ Permit preparation for drilling Q3/4 2023
- ✓ Drilling Planned Q3/4 2023, Q1/2 2024

- ✓ Budget - Phase 1 \$300-350K, Phase 2 \$600-750K



Mystery - Exploration Claims

TSX Venture: SSE



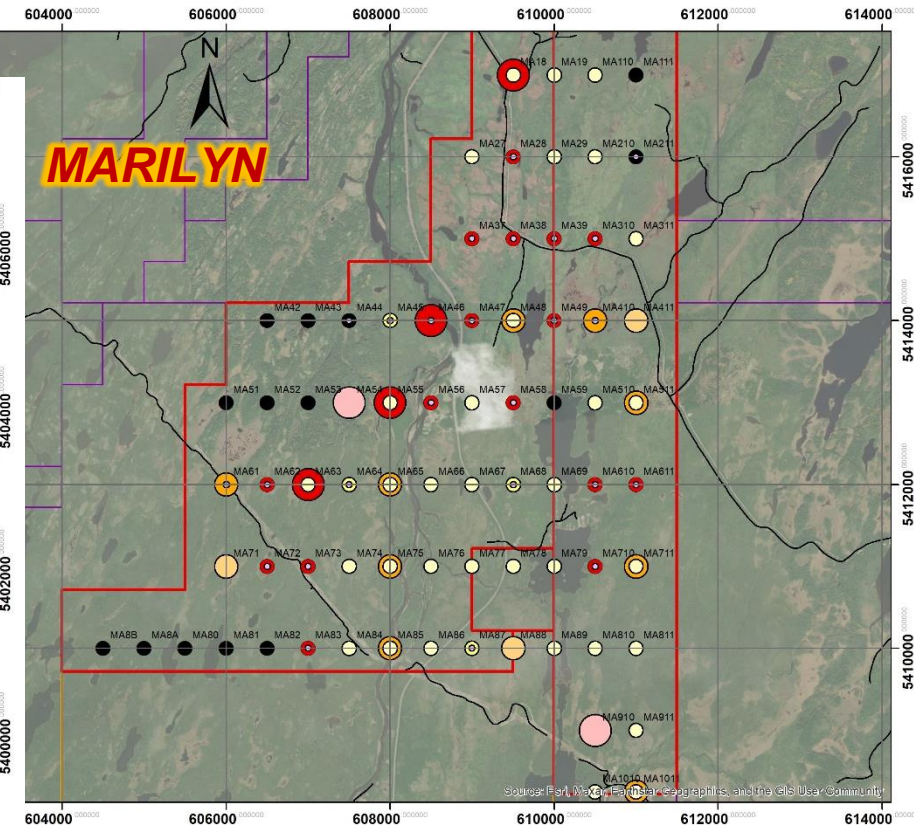
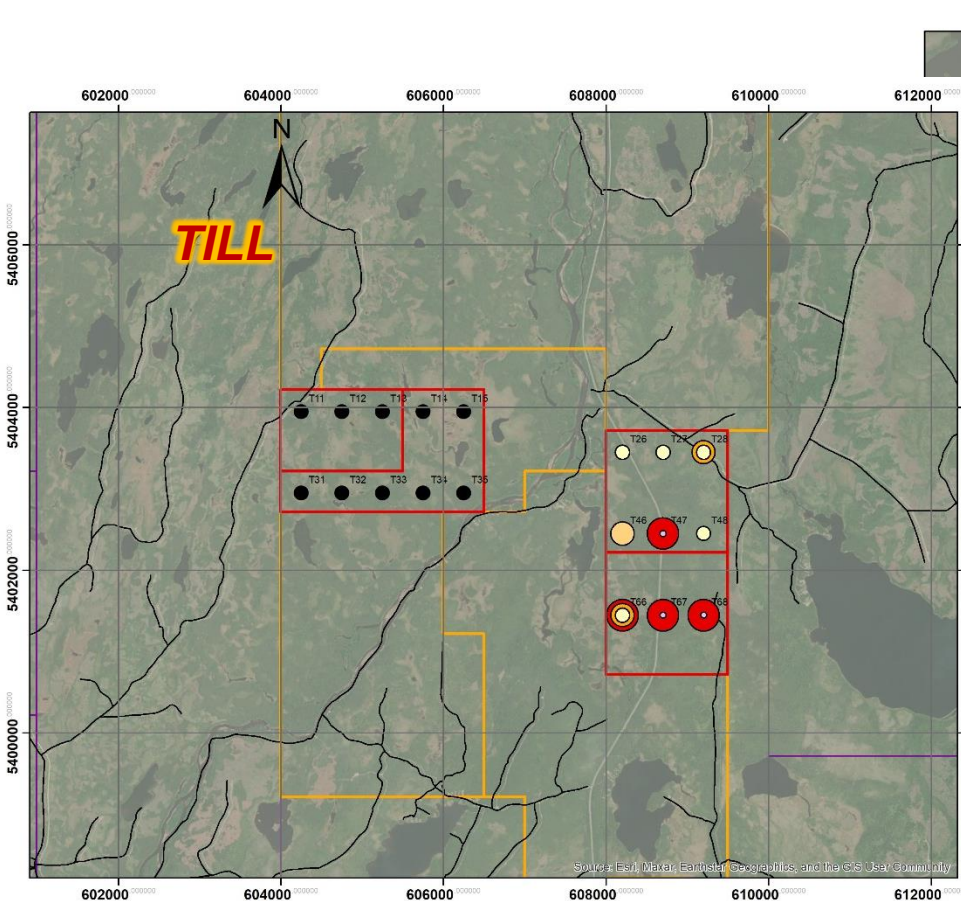
“We now have two major claim blocks, great access, prospective geology with only limited exploration and no history of drilling. Proximal to showings on western boundary. Airborne geophysics and till sampling completed. More ground sampling to follow with early targets identified.”



Mystery - Gold Grain in Till Sampling

TSX Venture: SSE

MYSTERY

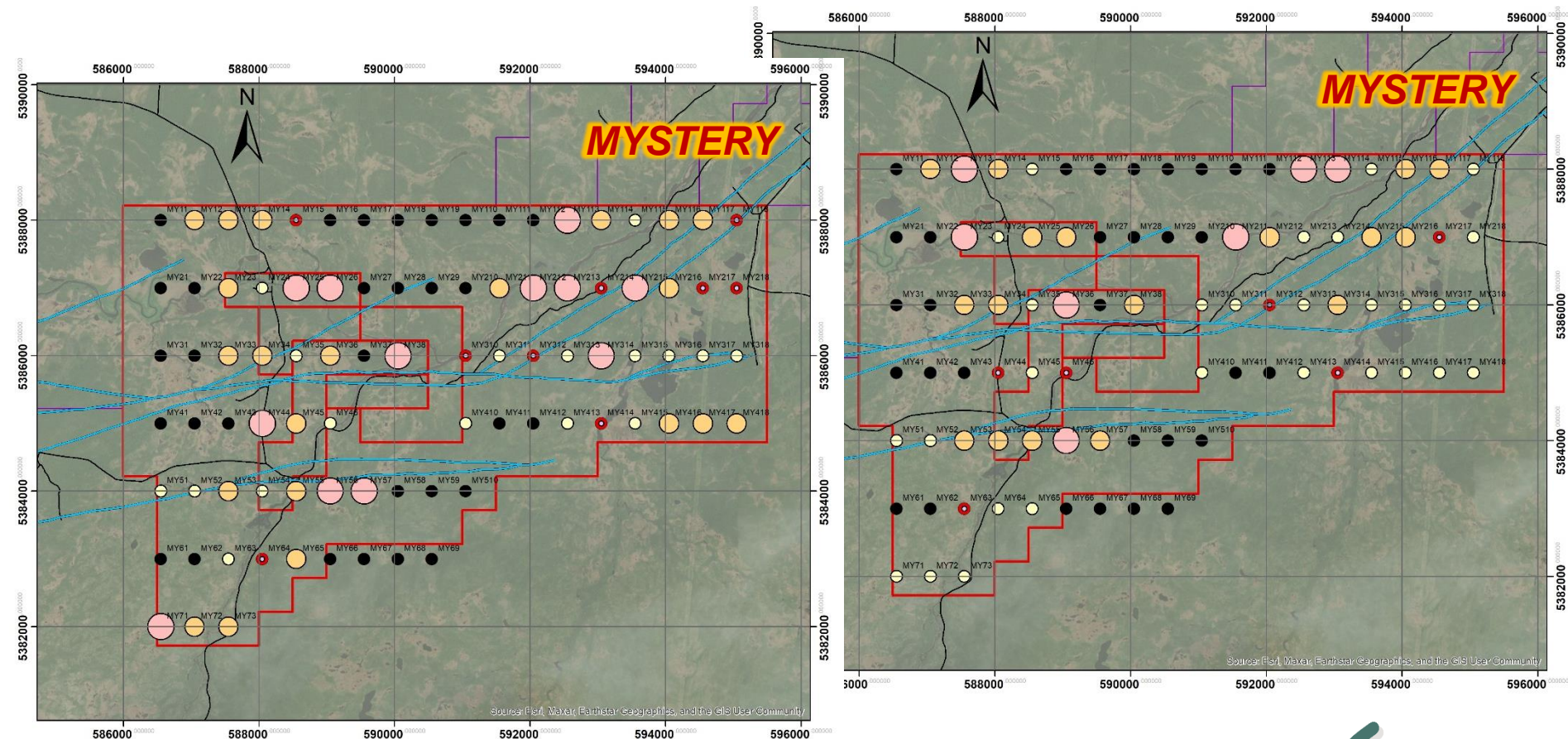


Property-wide till sampling for heavy mineral concentration, gold grain collection with frequency, size and morphological analysis, and geochemical multi-element analysis. Samples in red collected to date.



Mystery – Geochemical Sampling

TSX Venture: SSE



Property-wide till sampling for heavy mineral concentration, gold grain collection with frequency, size and morphological analysis, and geochemical multi-element analysis. Arsenic and Antimony heavy metal pathfinders shown in large red and pink symbols.



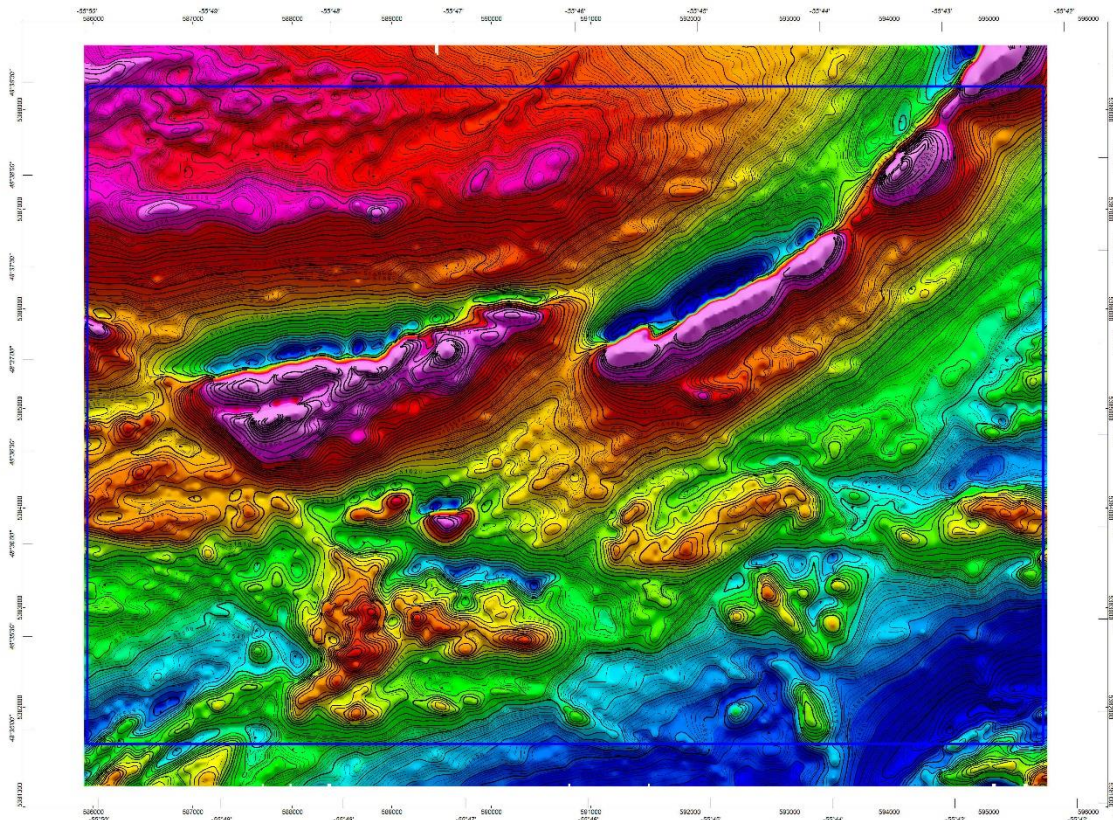
Mystery - 2022 Airborne Geophysics

TSX Venture: SSE

MPX Geophysics
Feb 2022
Preliminary Map

Total Field Magnetics
(TMI)

Multiple rock types offset
by branching and
intersecting structural
trends which are key to
localization of regional
gold mineralization



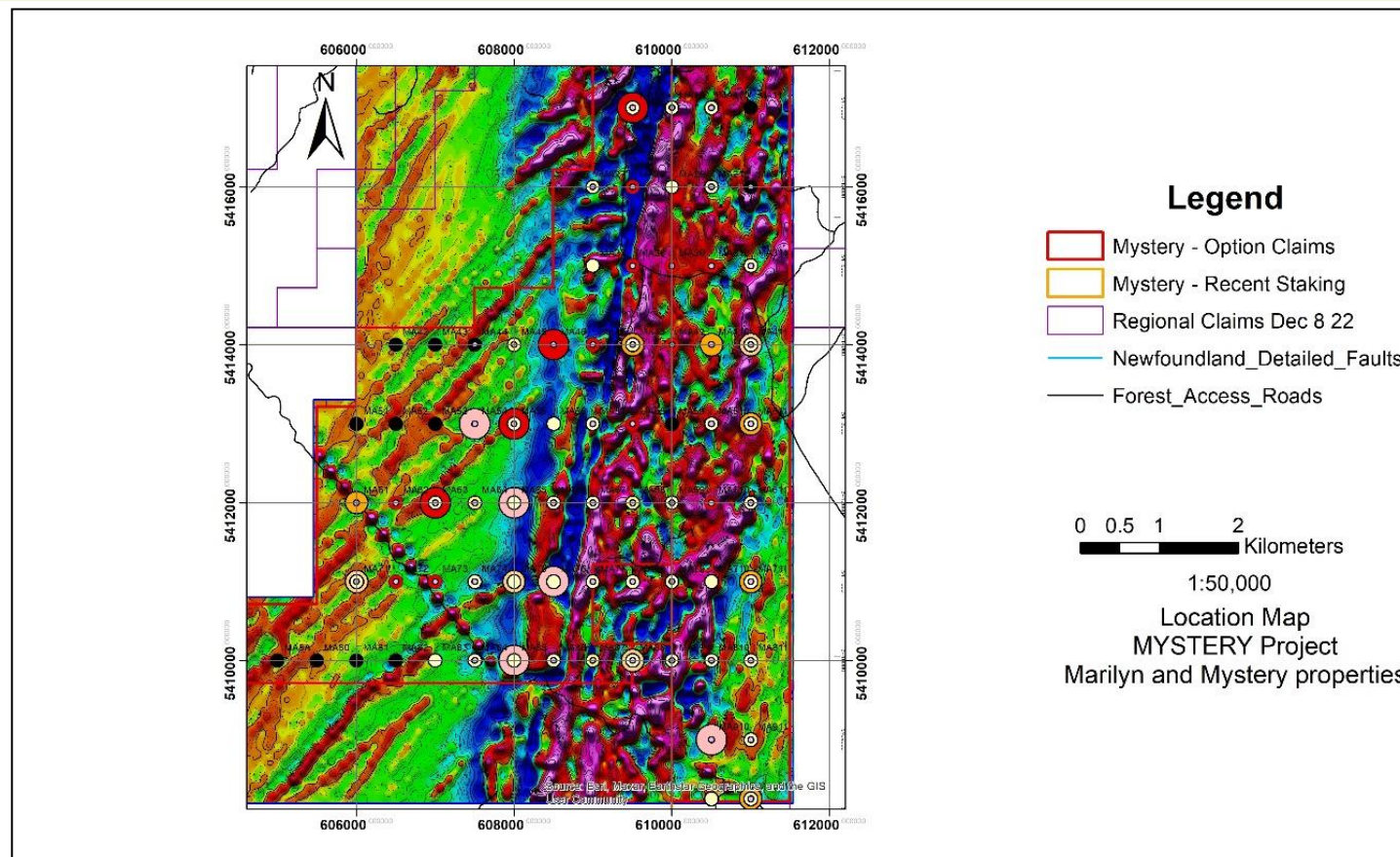
Survey Area Boundary

SILVER SPRUCE RESOURCES INC.
South Block (Mystery)
Survey in NFLD
Total Magnetic Intensity (TMI)
PRELIMINARY
MPX Geophysics Ltd.



Mystery - 2022 Airborne Geophysics

TSX Venture: SSE



Map of the Marilyn claims showing combined gold grain frequency and heavy metal geochemical signature anomalies upon airborne geophysical map – first vertical derivative. Botwood Group metasediments on west with northeast fabric in contact with north-south Mount Peyton multi-phase intrusion to the east. Black dots denote unsampled sites. Powerline crosses to SE.



Mystery - Exploration Plans

TSX Venture: SSE

- ✓ GIS Compilation Q4 2021 to Q3 2023
- ✓ Review and Interpretation of Regional and Property Geophysical Surveys Q2/3 2023
- ✓ Structural and Lineament Mapping Q2/3 2023
- ✓ Gold Grain Till Sampling Q2/3 2023
- ✓ Till Processing and Assays Q3/2023
- ✓ Prospecting, Soil and Rock Geochemistry, Alteration, Targeted mapping Q2/3 2023

- ✓ Permit preparation for drilling Q3/4 2023
- ✓ Drilling proposed Q3/4 2023, Q1/2 2024

- ✓ Budget - Phase 1 \$300,000 – \$350,000
- ✓ Budget - Phase 2 \$600,000 - \$750,000



Silver Spruce Resources Inc.

TSX Venture: SSE, USA OTCQB: SSEBF, Frankfurt: S6Q



Suite 440, 1600 Bedford Highway,
Bedford, Nova Scotia, B4A 1E8 Canada

Michael Kinley CEO Director 902-402-0388
Greg Davison PGeo VPX Director 250-521-0444

info@silverspruceresources.com
www.silverspruceresources.com

